

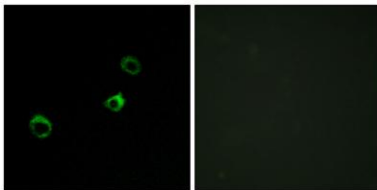
CYB561D1 rabbit pAb**Cat#: orb768475 (Manual)**

For research use only. Not intended for diagnostic use.

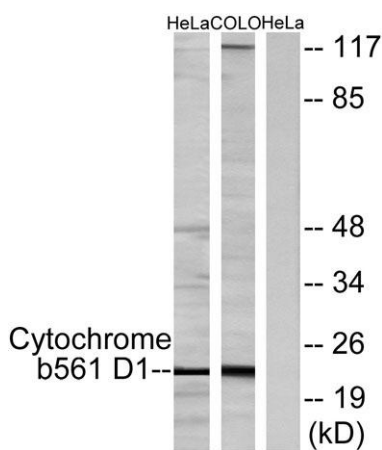
Product Name	CYB561D1 rabbit pAb
Host species	Rabbit
Applications	WB;IF;ELISA
Species Cross-Reactivity	Human;Rat;Mouse;
Recommended dilutions	Western Blot: 1/500 - 1/2000. Immunofluorescence: 1/200 - 1/1000. ELISA: 1/40000. Not yet tested in other applications.
Immunogen	The antiserum was produced against synthesized peptide derived from human CYB561D1. AA range: 180-229
Specificity	CYB561D1 Polyclonal Antibody detects endogenous levels of CYB561D1 protein.
Formulation	Liquid in PBS containing 50% glycerol, 0.5% BSA and 0.02% sodium azide..
Storage	Store at -20°C. Avoid repeated freeze-thaw cycles.
Protein Name	Cytochrome b561 domain-containing protein 1
Gene Name	CYB561D1
Cellular localization	Membrane ; Multi-pass membrane protein .
Purification	The antibody was affinity-purified from rabbit antiserum by affinity-chromatography using epitope-specific immunogen.
Clonality	Polyclonal

Concentration	1 mg/ml
Observed band	23kD
Human Gene ID	284613
Human Swiss-Prot Number	Q8N8Q1
Alternative Names	CYB561D1; Cytochrome b561 domain-containing protein 1

Background cofactor: Binds 2 heme groups non-covalently., similarity: Contains 1 cytochrome b561 domain.,



Immunofluorescence analysis of MCF-7 cells, using Cytochrome b561 D1 Antibody. The picture on the right is blocked with the synthesized peptide.



Western blot analysis of lysates from HeLa cells and COLO205 cells, using Cytochrome b561 D1 Antibody. The lane on the right is blocked with the synthesized peptide.