

## GPR22 rabbit pAb

**Cat#: orb768473 (Manual)**

For research use only. Not intended for diagnostic use.

<b>Product Name</b>	GPR22 rabbit pAb
<b>Host species</b>	Rabbit
<b>Applications</b>	IF;ELISA
<b>Species Cross-Reactivity</b>	Human;Mouse
<b>Recommended dilutions</b>	Immunofluorescence: 1/200 - 1/1000. ELISA: 1/5000. Not yet tested in other applications.
<b>Immunogen</b>	The antiserum was produced against synthesized peptide derived from human GPR22. AA range:271-320
<b>Specificity</b>	GPR22 Polyclonal Antibody detects endogenous levels of GPR22 protein.
<b>Formulation</b>	Liquid in PBS containing 50% glycerol, 0.5% BSA and 0.02% sodium azide..
<b>Storage</b>	Store at -20°C. Avoid repeated freeze-thaw cycles.
<b>Protein Name</b>	Probable G-protein coupled receptor 22
<b>Gene Name</b>	GPR22
<b>Cellular localization</b>	Cell membrane ; Multi-pass membrane protein .
<b>Purification</b>	The antibody was affinity-purified from rabbit antiserum by affinity-chromatography using epitope-specific immunogen.
<b>Clonality</b>	Polyclonal

**Concentration** 1 mg/ml

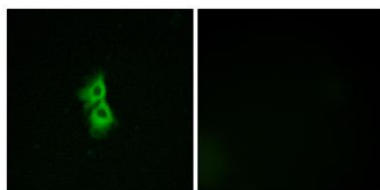
**Observed band**

**Human Gene ID** 2845

**Human Swiss-Prot Number** Q99680

**Alternative Names** GPR22; Probable G-protein coupled receptor 22

**Background** This gene is a member of the G-protein coupled receptor 1 family and encodes a multi-pass membrane protein. [provided by RefSeq, Jul 2008],



**Immunofluorescence analysis of MCF7 cells, using GPR22 Antibody. The picture on the right is blocked with the synthesized peptide.**