

GPR17 rabbit pAb

Cat#: orb768467 (Manual)

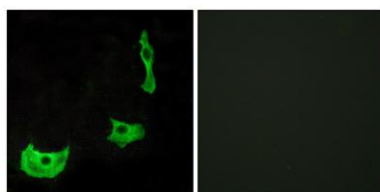
For research use only. Not intended for diagnostic use.

Product Name	GPR17 rabbit pAb
Host species	Rabbit
Applications	WB;IF;ELISA
Species Cross-Reactivity	Human;Mouse;Rat
Recommended dilutions	Western Blot: 1/500 - 1/2000. Immunofluorescence: 1/200 - 1/1000. ELISA: 1/5000. Not yet tested in other applications.
Immunogen	The antiserum was produced against synthesized peptide derived from human GPR17. AA range:196-245
Specificity	GPR17 Polyclonal Antibody detects endogenous levels of GPR17 protein.
Formulation	Liquid in PBS containing 50% glycerol, 0.5% BSA and 0.02% sodium azide..
Storage	Store at -20°C. Avoid repeated freeze-thaw cycles.
Protein Name	Uracil nucleotide/cysteinyl leukotriene receptor
Gene Name	GPR17
Cellular localization	Cell membrane; Multi-pass membrane protein.
Purification	The antibody was affinity-purified from rabbit antiserum by affinity-chromatography using epitope-specific immunogen.
Clonality	Polyclonal

Concentration	1 mg/ml
Observed band	59kD
Human Gene ID	2840
Human Swiss-Prot Number	Q13304
Alternative Names	GPR17; Uracil nucleotide/cysteinyl leukotriene receptor; UDP/CysLT receptor; G-protein coupled receptor 17; P2Y-like receptor; R12

Background

function: Dual specificity receptor for uracil nucleotides and cysteinyl leukotrienes (CysLTs). Signals through G(i) and inhibition of adenylyl cyclase. May mediate brain damage by nucleotides and CysLTs following ischemia.,similarity: Belongs to the G-protein coupled receptor 1 family.,tissue specificity: Expressed in brain, kidney, heart and umbilical vein endothelial cells. Highest level in brain.,



Immunofluorescence analysis of HeLa cells, using GPR17 Antibody. The picture on the right is blocked with the synthesized peptide.