

Ksr2 rabbit pAb**Cat#: orb768459 (Manual)**

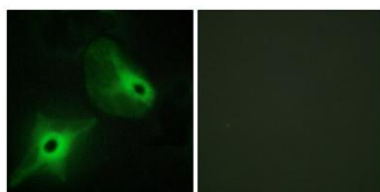
For research use only. Not intended for diagnostic use.

Product Name	Ksr2 rabbit pAb
Host species	Rabbit
Applications	WB;IHC;IF;ELISA
Species Cross-Reactivity	Human;Mouse
Recommended dilutions	Western Blot: 1/500 - 1/2000. Immunohistochemistry: 1/100 - 1/300. Immunofluorescence: 1/200 - 1/1000. ELISA: 1/40000. Not yet tested in other applications.
Immunogen	The antiserum was produced against synthesized peptide derived from human KSR2. AA range:671-720
Specificity	Ksr2 Polyclonal Antibody detects endogenous levels of Ksr2 protein.
Formulation	Liquid in PBS containing 50% glycerol, 0.5% BSA and 0.02% sodium azide..
Storage	Store at -20°C. Avoid repeated freeze-thaw cycles.
Protein Name	Kinase suppressor of Ras 2
Gene Name	KSR2
Cellular localization	Cytoplasm . Membrane ; Peripheral membrane protein .
Purification	The antibody was affinity-purified from rabbit antiserum by affinity-chromatography using epitope-specific immunogen.
Clonality	Polyclonal

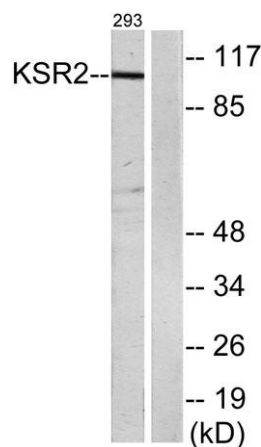
Concentration	1 mg/ml
Observed band	108kD
Human Gene ID	283455
Human Swiss-Prot Number	Q6VAB6
Alternative Names	KSR2; Kinase suppressor of Ras 2; hKSR2

Background

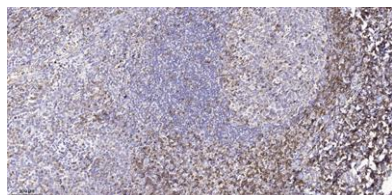
domain:The protein kinase domain is predicted to be catalytically inactive.,function:Location-regulated scaffold connecting MEK to RAF. Blocks MAP3K8 kinase activity and MAP3K8-mediated signaling. Acts as a negative regulator of MAP3K3-mediated activation of ERK, JNK and NF-kappa-B pathways, inhibiting MAP3K3-mediated interleukin-8 production.,PTM:Phosphorylated on Ser-474 by MARK3.,similarity:Belongs to the protein kinase superfamily. TKL Ser/Thr protein kinase family.,similarity:Contains 1 phorbol-ester/DAG-type zinc finger.,similarity:Contains 1 protein kinase domain.,subunit:Interacts with MAP2K1, MAP3K8, MAPK, RAS and RAF.,tissue specificity:Mainly expressed in brain and kidney.,



Immunofluorescence analysis of HeLa cells, using KSR2 Antibody. The picture on the right is blocked with the synthesized peptide.



Western blot analysis of lysates from 293 cells, using KSR2 Antibody. The lane on the right is blocked with the synthesized peptide.



Immunohistochemical analysis of paraffin-embedded human tonsil. 1, Tris-EDTA, pH 9.0 was used for antigen retrieval. 2 Antibody was diluted at 1:200 (4° overnight). 3, Secondary antibody was diluted at 1:200 (room temperature, 45 min).