

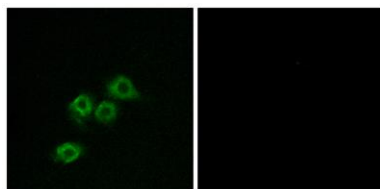
**GPR1 rabbit pAb****Cat#: orb768449 (Manual)**

For research use only. Not intended for diagnostic use.

<b>Product Name</b>	GPR1 rabbit pAb
<b>Host species</b>	Rabbit
<b>Applications</b>	IF;ELISA
<b>Species Cross-Reactivity</b>	Human;Mouse;Rat
<b>Recommended dilutions</b>	Immunofluorescence: 1/200 - 1/1000. ELISA: 1/5000. Not yet tested in other applications.
<b>Immunogen</b>	The antiserum was produced against synthesized peptide derived from human GPR1. AA range:121-170
<b>Specificity</b>	GPR1 Polyclonal Antibody detects endogenous levels of GPR1 protein.
<b>Formulation</b>	Liquid in PBS containing 50% glycerol, 0.5% BSA and 0.02% sodium azide..
<b>Storage</b>	Store at -20°C. Avoid repeated freeze-thaw cycles.
<b>Protein Name</b>	G-protein coupled receptor 1
<b>Gene Name</b>	GPR1
<b>Cellular localization</b>	Cell membrane ; Multi-pass membrane protein . Internalizes in presence of its ligand, TAFA1 (By similarity). Internalizes efficiently in response to RARRES2 (PubMed:27716822). .
<b>Purification</b>	The antibody was affinity-purified from rabbit antiserum by affinity-chromatography using epitope-specific immunogen.

<b>Clonality</b>	Polyclonal
<b>Concentration</b>	1 mg/ml
<b>Observed band</b>	
<b>Human Gene ID</b>	2825
<b>Human Swiss-Prot Number</b>	P46091
<b>Alternative Names</b>	GPR1; G-protein coupled receptor 1

**Background** function:Orphan receptor. Probable opioid receptor. Can act as a co-receptor for HIV-1.,similarity:Belongs to the G-protein coupled receptor 1 family.,tissue specificity:Expressed in hippocampus.,



**Immunofluorescence analysis of MCF7 cells, using GPR1 Antibody. The picture on the right is blocked with the synthesized peptide.**