

GnRH I rabbit pAb

Cat#: orb768445 (Manual)

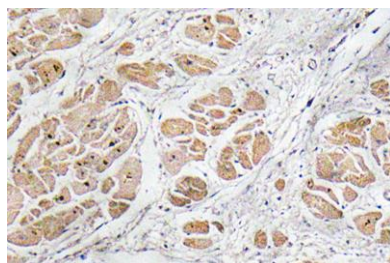
For research use only. Not intended for diagnostic use.

Product Name	GnRH I rabbit pAb
Host species	Rabbit
Applications	IHC;IF;ELISA
Species Cross-Reactivity	Human;Rat;Mouse;
Recommended dilutions	WB 1:500-2000 ,Immunohistochemistry: 1/100 - 1/300. ELISA: 1/10000. Not yet tested in other applications.
Immunogen	The antiserum was produced against synthesized peptide derived from human GnRH I. AA range:43-92
Specificity	GnRH I Polyclonal Antibody detects endogenous levels of GnRH I protein.
Formulation	Liquid in PBS containing 50% glycerol, 0.5% BSA and 0.02% sodium azide..
Storage	Store at -20°C. Avoid repeated freeze-thaw cycles.
Protein Name	Progonadoliberin-1
Gene Name	GNRH1
Cellular localization	Secreted.
Purification	The antibody was affinity-purified from rabbit antiserum by affinity-chromatography using epitope-specific immunogen.
Clonality	Polyclonal

Concentration	1 mg/ml
Observed band	
Human Gene ID	2796
Human Swiss-Prot Number	P01148
Alternative Names	GNRH1; GNRH; GRH; LHRH; Progonadoliberin-1; Progonadoliberin I

Background

gonadotropin releasing hormone 1(GNRH1) Homo sapiens This gene encodes a preproprotein that is proteolytically processed to generate a peptide that is a member of the gonadotropin-releasing hormone (GnRH) family of peptides. Alternative splicing results in multiple transcript variants, at least one of which is secreted and then cleaved to generate gonadoliberin-1 and GnRH-associated peptide 1. Gonadoliberin-1 stimulates the release of luteinizing and follicle stimulating hormones, which are important for reproduction. Mutations in this gene are associated with hypogonadotropic hypogonadism. [provided by RefSeq, Nov 2015],



Immunohistochemistry analysis of GnRH I antibody in paraffin-embedded human heart tissue.