

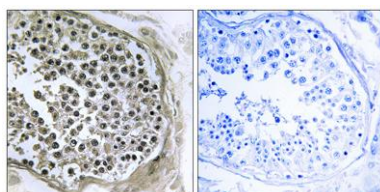
GIDRP88 rabbit pAb

Cat#: orb768428 (Manual)

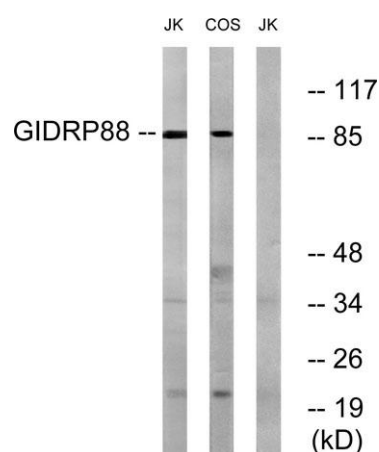
For research use only. Not intended for diagnostic use.

Product Name	GIDRP88 rabbit pAb
Host species	Rabbit
Applications	WB;IHC;IF;ELISA
Species Cross-Reactivity	Human;Mouse;Monkey
Recommended dilutions	Western Blot: 1/500 - 1/2000. Immunohistochemistry: 1/100 - 1/300. ELISA: 1/40000. Not yet tested in other applications.
Immunogen	The antiserum was produced against synthesized peptide derived from human GIDRP88. AA range:721-770
Specificity	GIDRP88 Polyclonal Antibody detects endogenous levels of GIDRP88 protein.
Formulation	Liquid in PBS containing 50% glycerol, 0.5% BSA and 0.02% sodium azide..
Storage	Store at -20°C. Avoid repeated freeze-thaw cycles.
Protein Name	R3H and coiled-coil domain-containing protein 1-like
Gene Name	R3HCC1L
Cellular localization	exon-exon junction complex,
Purification	The antibody was affinity-purified from rabbit antiserum by affinity-chromatography using epitope-specific immunogen.
Clonality	Polyclonal

Concentration	1 mg/ml
Observed band	88kD
Human Gene ID	27291
Human Swiss-Prot Number	Q7Z5L2
Alternative Names	R3HCC1L; C10orf28; GIDRP88; R3H and coiled-coil domain-containing protein 1-like; Growth inhibition and differentiation-related protein 88; Putative mitochondrial space protein 32.1
Background	tissue specificity:Expressed in placenta.,



Immunohistochemistry analysis of paraffin-embedded human testis tissue, using GIDRP88 Antibody. The picture on the right is blocked with the synthesized peptide.



Western blot analysis of lysates from Jurkat and COS cells, using GIDRP88 Antibody. The lane on the right is blocked with the synthesized peptide.