

PA26 rabbit pAb

Cat#: orb768423 (Manual)

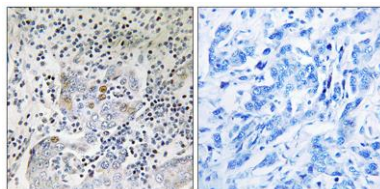
For research use only. Not intended for diagnostic use.

| | |
|---------------------------------|--|
| Product Name | PA26 rabbit pAb |
| Host species | Rabbit |
| Applications | WB;IHC;IF;ELISA |
| Species Cross-Reactivity | Human;Mouse;Rat |
| Recommended dilutions | Western Blot: 1/500 - 1/2000. Immunohistochemistry: 1/100 - 1/300. ELISA: 1/20000. Not yet tested in other applications. |
| Immunogen | The antiserum was produced against synthesized peptide derived from human SESN1. AA range:271-320 |
| Specificity | PA26 Polyclonal Antibody detects endogenous levels of PA26 protein. |
| Formulation | Liquid in PBS containing 50% glycerol, 0.5% BSA and 0.02% sodium azide.. |
| Storage | Store at -20°C. Avoid repeated freeze-thaw cycles. |
| Protein Name | Sestrin-1 |
| Gene Name | SESN1 |
| Cellular localization | Nucleus . Cytoplasm . |
| Purification | The antibody was affinity-purified from rabbit antiserum by affinity-chromatography using epitope-specific immunogen. |
| Clonality | Polyclonal |

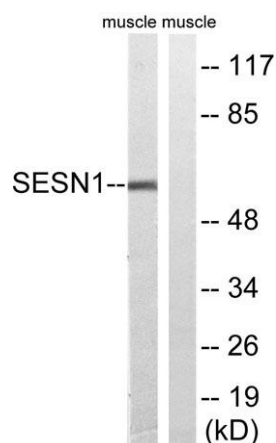
| | |
|--------------------------------|---|
| Concentration | 1 mg/ml |
| Observed band | 57kD |
| Human Gene ID | 27244 |
| Human Swiss-Prot Number | Q9Y6P5 |
| Alternative Names | SESN1; PA26; SEST1; Sestrin-1; p53-regulated protein PA26 |

Background

This gene encodes a member of the sestrin family. Sestrins are induced by the p53 tumor suppressor protein and play a role in the cellular response to DNA damage and oxidative stress. The encoded protein mediates p53 inhibition of cell growth by activating AMP-activated protein kinase, which results in the inhibition of the mammalian target of rapamycin protein. The encoded protein also plays a critical role in antioxidant defense by regenerating overoxidized peroxiredoxins, and the expression of this gene is a potential marker for exposure to radiation. Alternatively spliced transcript variants encoding multiple isoforms have been observed for this gene. [provided by RefSeq, Dec 2010],



Immunohistochemistry analysis of paraffin-embedded human breast carcinoma tissue, using SESN1 Antibody. The picture on the right is blocked with the synthesized peptide.



Western blot analysis of lysates from rat muscle cells, using SESN1 Antibody. The lane on the right is blocked with the synthesized peptide.