

STK36 rabbit pAb**Cat#: orb768418 (Manual)**

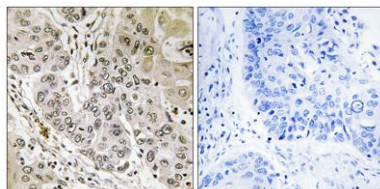
For research use only. Not intended for diagnostic use.

Product Name	STK36 rabbit pAb
Host species	Rabbit
Applications	WB;IHC;IF;ELISA
Species Cross-Reactivity	Human;Mouse
Recommended dilutions	Western Blot: 1/500 - 1/2000. Immunohistochemistry: 1/100 - 1/300. ELISA: 1/5000. Not yet tested in other applications.
Immunogen	The antiserum was produced against synthesized peptide derived from human STK36. AA range:387-436
Specificity	STK36 Polyclonal Antibody detects endogenous levels of STK36 protein.
Formulation	Liquid in PBS containing 50% glycerol, 0.5% BSA and 0.02% sodium azide..
Storage	Store at -20°C. Avoid repeated freeze-thaw cycles.
Protein Name	Serine/threonine-protein kinase 36
Gene Name	STK36
Cellular localization	Cytoplasm . Nucleus . Cytoplasm, cytoskeleton, cilium axoneme . Low levels also present in the nucleus. .
Purification	The antibody was affinity-purified from rabbit antiserum by affinity-chromatography using epitope-specific immunogen.
Clonality	Polyclonal

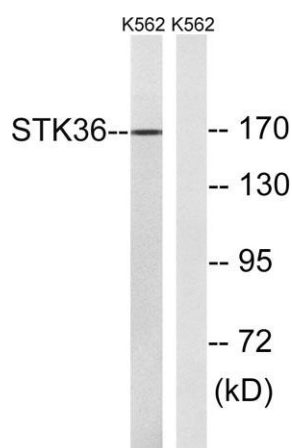
Concentration	1 mg/ml
Observed band	170kD
Human Gene ID	27148
Human Swiss-Prot Number	Q9NRP7
Alternative Names	STK36; KIAA1278; Serine/threonine-protein kinase 36; Fused homolog

Background

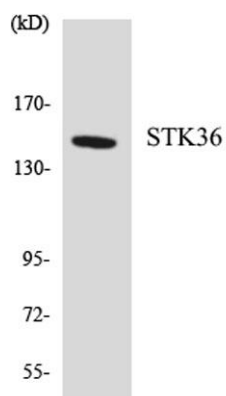
This gene encodes a member of the serine/threonine kinase family of enzymes. This family member is similar to a Drosophila protein that plays a key role in the Hedgehog signaling pathway. This human protein is a positive regulator of the GLI zinc-finger transcription factors. Knockout studies of the homologous mouse gene suggest that defects in this human gene may lead to congenital hydrocephalus, possibly due to a functional defect in motile cilia. Because Hedgehog signaling is frequently activated in certain kinds of gastrointestinal cancers, it has been suggested that this gene is a target for the treatment of these cancers. Alternative splicing of this gene results in multiple transcript variants. [provided by RefSeq, Aug 2011],



Immunohistochemistry analysis of paraffin-embedded human lung carcinoma tissue, using STK36 Antibody. The picture on the right is blocked with the synthesized peptide.



Western blot analysis of lysates from K562 cells, using STK36 Antibody. The lane on the right is blocked with the synthesized peptide.



Western blot analysis of the lysates from HepG2 cells using STK36 antibody.