

INPP5J rabbit pAb**Cat#: orb768417 (Manual)**

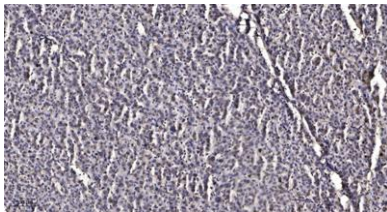
For research use only. Not intended for diagnostic use.

Product Name	INPP5J rabbit pAb
Host species	Rabbit
Applications	IHC;IF;ELISA
Species Cross-Reactivity	Human;Rat
Recommended dilutions	Immunohistochemistry: 1/100 - 1/300. ELISA: 1/40000. Not yet tested in other applications.
Immunogen	Synthesized peptide derived from INPP5J . at AA range: 850-930
Specificity	INPP5J Polyclonal Antibody detects endogenous levels of INPP5J protein.
Formulation	Liquid in PBS containing 50% glycerol, 0.5% BSA and 0.02% sodium azide..
Storage	Store at -20°C. Avoid repeated freeze-thaw cycles.
Protein Name	Phosphatidylinositol 4,5-bisphosphate 5-phosphatase A
Gene Name	INPP5J
Cellular localization	Cytoplasm . Predominantly localized to membrane ruffles. .
Purification	The antibody was affinity-purified from rabbit antiserum by affinity-chromatography using epitope-specific immunogen.
Clonality	Polyclonal

Concentration	1 mg/ml
Observed band	
Human Gene ID	27124
Human Swiss-Prot Number	Q15735
Alternative Names	INPP5J; PIB5PA; PIPP; Phosphatidylinositol 4; 5-bisphosphate 5-phosphatase A; Inositol polyphosphate 5-phosphatase J

Background

catalytic activity:1D-myo-inositol 1,3,4,5-tetrakisphosphate + H(2)O = 1D-myo-inositol 1,3,4-trisphosphate + phosphate.,catalytic activity:D-myo-inositol 1,4,5-trisphosphate + H(2)O = myo-inositol 1,4-bisphosphate + phosphate.,domain:The 5 Arg-Ser-Xaa-Ser-Xaa-Xaa (RSXSXX) motifs may constitute binding sites for the 14-3-3 protein.,function:Inositol 5-phosphatase, which converts inositol 1,4,5-trisphosphate to inositol 1,4-bisphosphate. Also converts phosphatidylinositol 4,5-bisphosphate to phosphatidylinositol 4-phosphate and inositol 1,3,4,5-tetrakisphosphate to inositol 1,3,4-trisphosphate in vitro. May be involved in modulation of the function of inositol and phosphatidylinositol polyphosphate-binding proteins that are present at membranes ruffles.,PTM:Phosphorylated at Ser/Thr residues.,similarity:Belongs to the inositol-1,4,5-trisphosphate 5-phosphatase type II family.,subcellular location:Predominantly localized to membrane ruffles.,



Immunohistochemical analysis of paraffin-embedded human liver cancer. 1, Antibody was diluted at 1:200(4° overnight). 2, Tris-EDTA,pH9.0 was used for antigen retrieval. 3,Secondary antibody was diluted at 1:200(room temperature, 45min).