

Mox1 rabbit pAb

Cat#: orb768407 (Manual)

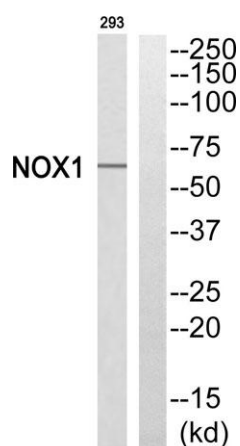
For research use only. Not intended for diagnostic use.

Product Name	Mox1 rabbit pAb
Host species	Rabbit
Applications	WB;IHC
Species Cross-Reactivity	Human;Mouse
Recommended dilutions	WB 1:500-2000;IHC-p 1:50-300
Immunogen	The antiserum was produced against synthesized peptide derived from human NOX1. AA range:436-485
Specificity	Mox1 Polyclonal Antibody detects endogenous levels of Mox1 protein.
Formulation	Liquid in PBS containing 50% glycerol, 0.5% BSA and 0.02% sodium azide..
Storage	Store at -20°C. Avoid repeated freeze-thaw cycles.
Protein Name	NADPH oxidase 1
Gene Name	NOX1
Cellular localization	Cell projection, invadopodium membrane ; Multi-pass membrane protein . Cell membrane .
Purification	The antibody was affinity-purified from rabbit antiserum by affinity-chromatography using epitope-specific immunogen.
Clonality	Polyclonal

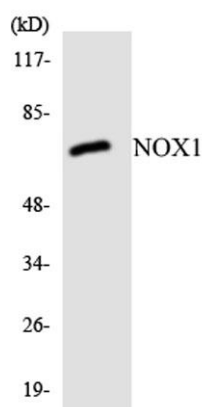
Concentration	1 mg/ml
Observed band	65kD
Human Gene ID	27035
Human Swiss-Prot Number	Q9Y5S8
Alternative Names	NOX1; MOX1; NOH1; NADPH oxidase 1; NOX-1; Mitogenic oxidase 1; MOX-1; NADH/NADPH mitogenic oxidase subunit P65-MOX; NOH-1

Background

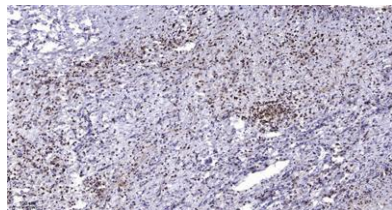
This gene encodes a member of the NADPH oxidase family of enzymes responsible for the catalytic one-electron transfer of oxygen to generate superoxide or hydrogen peroxide. Alternatively spliced transcript variants encoding multiple isoforms have been observed for this gene. [provided by RefSeq, Nov 2012],



Western blot analysis of NOX1 Antibody. The lane on the right is blocked with the NOX1 peptide.



Western blot analysis of the lysates from HeLa cells using NOX1 antibody.



Immunohistochemical analysis of paraffin-embedded human liver cancer. 1, Antibody was diluted at 1:200(4° overnight). 2, Tris-EDTA,pH9.0 was used for antigen retrieval. 3,Secondary antibody was diluted at 1:200(room temperature, 45min).