

Connexin 46 rabbit pAb

Cat#: orb768402 (Manual)

For research use only. Not intended for diagnostic use.

Product Name	Connexin 46 rabbit pAb
Host species	Rabbit
Applications	IHC;IF;ELISA
Species Cross-Reactivity	Human;Mouse;Rat
Recommended dilutions	IHC-p 1:100-500;IF/ICC 1:100-500;ELISA 1:5000-20000
Immunogen	The antiserum was produced against synthesized peptide derived from human GJA3. AA range:151-200
Specificity	Connexin 46 Polyclonal Antibody detects endogenous levels of Connexin 46 protein.
Formulation	Liquid in PBS containing 50% glycerol, 0.5% BSA and 0.02% sodium azide..
Storage	Store at -20°C. Avoid repeated freeze-thaw cycles.
Protein Name	Gap junction alpha-3 protein
Gene Name	GJA3
Cellular localization	Cell membrane ; Multi-pass membrane protein . Cell junction, gap junction .
Purification	The antibody was affinity-purified from rabbit antiserum by affinity-chromatography using epitope-specific immunogen.
Clonality	Polyclonal

Concentration 1 mg/ml

Observed band

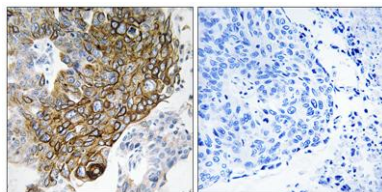
Human Gene ID 2700

Human Swiss-Prot Number Q9Y6H8

Alternative Names GJA3; Gap junction alpha-3 protein; Connexin-46; Cx46

Background

The protein encoded by this gene is a connexin and is a component of lens fiber gap junctions. Defects in this gene are a cause of zonular pulverulent cataract type 3 (CZP3). [provided by RefSeq, Jan 2010],



Immunohistochemistry analysis of paraffin-embedded human lung carcinoma tissue, using GJA3 Antibody. The picture on the right is blocked with the synthesized peptide.