

**GHRH-R rabbit pAb****Cat#: orb768393 (Manual)**

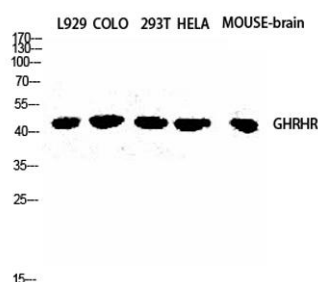
For research use only. Not intended for diagnostic use.

<b>Product Name</b>	GHRH-R rabbit pAb
<b>Host species</b>	Rabbit
<b>Applications</b>	WB;IF;ELISA
<b>Species Cross-Reactivity</b>	Human;Mouse;Rat
<b>Recommended dilutions</b>	Western Blot: 1/500 - 1/2000. Immunofluorescence: 1/200 - 1/1000. ELISA: 1/20000. Not yet tested in other applications.
<b>Immunogen</b>	The antiserum was produced against synthesized peptide derived from human GHRHR. AA range:351-400
<b>Specificity</b>	GHRH-R Polyclonal Antibody detects endogenous levels of GHRH-R protein.
<b>Formulation</b>	Liquid in PBS containing 50% glycerol, 0.5% BSA and 0.02% sodium azide..
<b>Storage</b>	Store at -20°C. Avoid repeated freeze-thaw cycles.
<b>Protein Name</b>	Growth hormone-releasing hormone receptor
<b>Gene Name</b>	GHRHR
<b>Cellular localization</b>	Cell membrane; Multi-pass membrane protein.
<b>Purification</b>	The antibody was affinity-purified from rabbit antiserum by affinity-chromatography using epitope-specific immunogen.
<b>Clonality</b>	Polyclonal

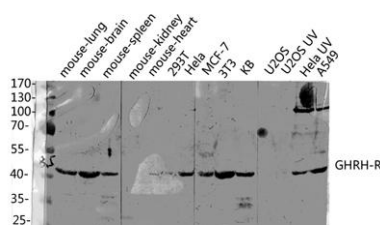
<b>Concentration</b>	1 mg/ml
<b>Observed band</b>	47kD
<b>Human Gene ID</b>	2692
<b>Human Swiss-Prot Number</b>	Q02643
<b>Alternative Names</b>	GHRHR; Growth hormone-releasing hormone receptor; GHRH receptor; Growth hormone-releasing factor receptor; GRF receptor; GRFR

## Background

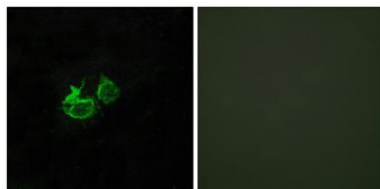
This gene encodes a receptor for growth hormone-releasing hormone. Binding of this hormone to the receptor leads to synthesis and release of growth hormone. Mutations in this gene have been associated with isolated growth hormone deficiency (IGHD), also known as Dwarfism of Sindh, a disorder characterized by short stature. [provided by RefSeq, Jun 2010],



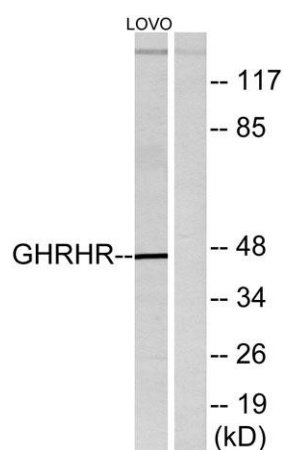
Western Blot analysis of L929 COLO 293T HELA MOUSE-brain cells using GHRH-R Polyclonal Antibody diluted at 1:2000



Western blot analysis of various lysis using GHRH-R Polyclonal Antibody diluted at 1:2000. Secondary antibody(catalog#:RS0002) was diluted at 1:20000



**Immunofluorescence analysis of HUVEC cells, using GHRHR Antibody. The picture on the right is blocked with the synthesized peptide.**



**Western blot analysis of lysates from LOVO cells, using GHRHR Antibody. The lane on the right is blocked with the synthesized peptide.**