

GDF-8 rabbit pAb

Cat#: orb768379 (Manual)

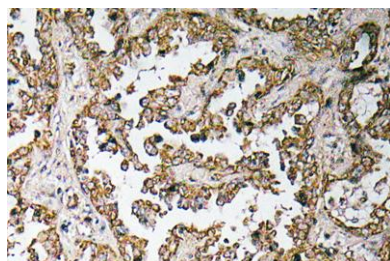
For research use only. Not intended for diagnostic use.

Product Name	GDF-8 rabbit pAb
Host species	Rabbit
Applications	WB;IHC;IF;ELISA
Species Cross-Reactivity	Human;Mouse
Recommended dilutions	Immunohistochemistry: 1/100 - 1/300. ELISA: 1/10000. Not yet tested in other applications.
Immunogen	The antiserum was produced against synthesized peptide derived from human GDF-8. AA range:38-87
Specificity	GDF-8 Polyclonal Antibody detects endogenous levels of GDF-8 protein.
Formulation	Liquid in PBS containing 50% glycerol, 0.5% BSA and 0.02% sodium azide..
Storage	Store at -20°C. Avoid repeated freeze-thaw cycles.
Protein Name	Growth/differentiation factor 8
Gene Name	MSTN
Cellular localization	Secreted .
Purification	The antibody was affinity-purified from rabbit antiserum by affinity-chromatography using epitope-specific immunogen.
Clonality	Polyclonal

Concentration	1 mg/ml
Observed band	
Human Gene ID	2660
Human Swiss-Prot Number	O14793
Alternative Names	MSTN; GDF8; Growth/differentiation factor 8; GDF-8; Myostatin

Background

myostatin(MSTN) Homo sapiens This gene encodes a secreted ligand of the TGF-beta (transforming growth factor-beta) superfamily of proteins. Ligands of this family bind various TGF-beta receptors leading to recruitment and activation of SMAD family transcription factors that regulate gene expression. The encoded preproprotein is proteolytically processed to generate each subunit of the disulfide-linked homodimer. This protein negatively regulates skeletal muscle cell proliferation and differentiation. Mutations in this gene are associated with increased skeletal muscle mass in humans and other mammals. [provided by RefSeq, Jul 2016],



Immunohistochemistry analysis of GDF-8 antibody in paraffin-embedded human lung carcinoma tissue.