

GATA-6 rabbit pAb

Cat#: orb768360 (Manual)

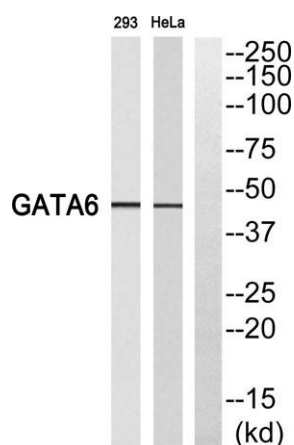
For research use only. Not intended for diagnostic use.

Product Name	GATA-6 rabbit pAb
Host species	Rabbit
Applications	WB;ELISA
Species Cross-Reactivity	Human;Mouse;Rat
Recommended dilutions	Western Blot: 1/500 - 1/2000. ELISA: 1/10000. Not yet tested in other applications.
Immunogen	The antiserum was produced against synthesized peptide derived from human GATA6. AA range:461-510
Specificity	GATA-6 Polyclonal Antibody detects endogenous levels of GATA-6 protein.
Formulation	Liquid in PBS containing 50% glycerol, 0.5% BSA and 0.02% sodium azide..
Storage	Store at -20°C. Avoid repeated freeze-thaw cycles.
Protein Name	Transcription factor GATA-6
Gene Name	GATA6
Cellular localization	Nucleus .
Purification	The antibody was affinity-purified from rabbit antiserum by affinity-chromatography using epitope-specific immunogen.
Clonality	Polyclonal

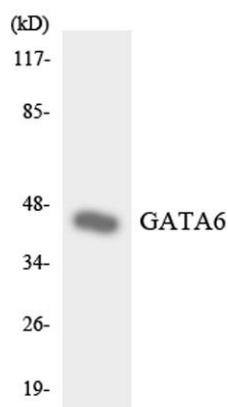
Concentration	1 mg/ml
Observed band	45kD
Human Gene ID	2627
Human Swiss-Prot Number	Q92908
Alternative Names	GATA6; Transcription factor GATA-6; GATA-binding factor 6

Background

This gene is a member of a small family of zinc finger transcription factors that play an important role in the regulation of cellular differentiation and organogenesis during vertebrate development. This gene is expressed during early embryogenesis and localizes to endo- and mesodermally derived cells during later embryogenesis and thereby plays an important role in gut, lung, and heart development. Mutations in this gene are associated with several congenital defects. [provided by RefSeq, Mar 2012],



Western blot analysis of GATA6 Antibody. The lane on the right is blocked with the GATA6 peptide.



Western blot analysis of the lysates from HepG2 cells using GATA6 antibody.



Explore. Bioreagents.

www.biorbyt.com