

## Gas8 rabbit pAb

**Cat#: orb768350 (Manual)**

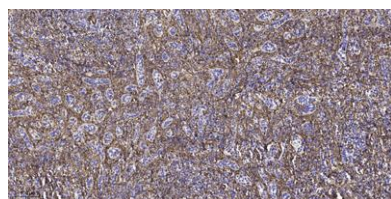
For research use only. Not intended for diagnostic use.

<b>Product Name</b>	Gas8 rabbit pAb
<b>Host species</b>	Rabbit
<b>Applications</b>	IHC;IF;WB;ELISA
<b>Species Cross-Reactivity</b>	Human;Mouse;Rat
<b>Recommended dilutions</b>	WB 1:500-2000 Immunohistochemistry: 1/100 - 1/300. ELISA: 1/40000. Not yet tested in other applications.
<b>Immunogen</b>	Synthesized peptide derived from the Internal region of human Gas8.
<b>Specificity</b>	Gas8 Polyclonal Antibody detects endogenous levels of Gas8 protein.
<b>Formulation</b>	Liquid in PBS containing 50% glycerol, 0.5% BSA and 0.02% sodium azide..
<b>Storage</b>	Store at -20°C. Avoid repeated freeze-thaw cycles.
<b>Protein Name</b>	Growth arrest-specific protein 8
<b>Gene Name</b>	GAS8
<b>Cellular localization</b>	Cytoplasm . Cytoplasm, cytoskeleton . Cell projection, cilium, flagellum . Cytoplasm, cytoskeleton, cilium axoneme . Cytoplasm, cytoskeleton, cilium basal body . Golgi apparatus . Cell projection, cilium . Cytoplasm, cytoskeleton, flagellum axoneme . Associates with microtubules (PubMed:10969087). Localized to the cytoplasm of round spermatids, the tails of elongating spermatids, and mature spermatid tail bundles protruding into the lumen, and in the flagellum of epididymal spermatozoa (By similarity). .

<b>Purification</b>	The antibody was affinity-purified from rabbit antiserum by affinity-chromatography using epitope-specific immunogen.
<b>Clonality</b>	Polyclonal
<b>Concentration</b>	1 mg/ml
<b>Observed band</b>	56kD
<b>Human Gene ID</b>	2622
<b>Human Swiss-Prot Number</b>	O95995
<b>Alternative Names</b>	GAS8; GAS11; Growth arrest-specific protein 8; GAS-8; Growth arrest-specific protein 11; GAS-11

#### Background

This gene includes 11 exons spanning 25 kb and maps to a region of chromosome 16 that is sometimes deleted in breast and prostate cancer. The second intron contains an apparently intronless gene, C16orf3, that is transcribed in the opposite orientation. This gene is a putative tumor suppressor gene. Several transcript variants encoding different isoforms have been found for this gene. [provided by RefSeq, Oct 2013],



**Immunohistochemical analysis of paraffin-embedded human spleen tissue.**  
**1,primary Antibody was diluted at 1:200(4° overnight). 2, Sodium citrate pH 6.0 was used for antigen retrieval(>98°C,20min). 3,Secondary antibody was diluted at 1:200**