

Gas1 rabbit pAb

Cat#: orb768348 (Manual)

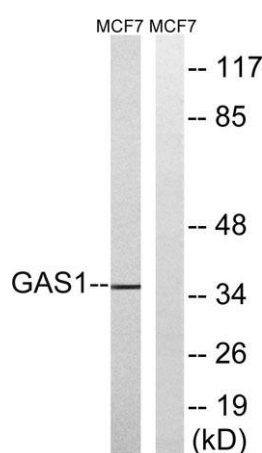
For research use only. Not intended for diagnostic use.

Product Name	Gas1 rabbit pAb
Host species	Rabbit
Applications	WB;ELISA
Species Cross-Reactivity	Human;Mouse
Recommended dilutions	Western Blot: 1/500 - 1/2000. ELISA: 1/40000. Not yet tested in other applications.
Immunogen	The antiserum was produced against synthesized peptide derived from human GAS1. AA range:241-290
Specificity	Gas1 Polyclonal Antibody detects endogenous levels of Gas1 protein.
Formulation	Liquid in PBS containing 50% glycerol, 0.5% BSA and 0.02% sodium azide..
Storage	Store at -20°C. Avoid repeated freeze-thaw cycles.
Protein Name	Growth arrest-specific protein 1
Gene Name	GAS1
Cellular localization	Cell membrane ; Lipid-anchor, GPI-anchor .
Purification	The antibody was affinity-purified from rabbit antiserum by affinity-chromatography using epitope-specific immunogen.
Clonality	Polyclonal

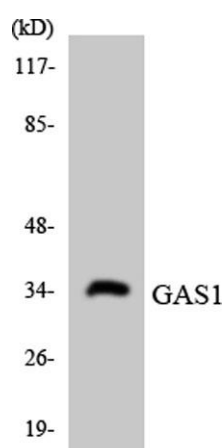
Concentration	1 mg/ml
Observed band	36kD
Human Gene ID	2619
Human Swiss-Prot Number	P54826
Alternative Names	GAS1; Growth arrest-specific protein 1; GAS-1

Background

Growth arrest-specific 1 plays a role in growth suppression. GAS1 blocks entry to S phase and prevents cycling of normal and transformed cells. Gas1 is a putative tumor suppressor gene. [provided by RefSeq, Jul 2008],



Western blot analysis of lysates from MCF-7 cells, using GAS1 Antibody. The lane on the right is blocked with the synthesized peptide.



Western blot analysis of the lysates from HeLa cells using GAS1 antibody.