

Nephrocystin-4 rabbit pAb

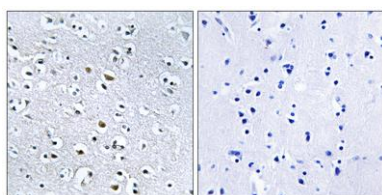
Cat#: orb768347 (Manual)

For research use only. Not intended for diagnostic use.

Product Name	Nephrocystin-4 rabbit pAb
Host species	Rabbit
Applications	IHC;IF;ELISA
Species Cross-Reactivity	Human;Rat;Mouse;
Recommended dilutions	Immunohistochemistry: 1/100 - 1/300. ELISA: 1/40000. Not yet tested in other applications.
Immunogen	The antiserum was produced against synthesized peptide derived from human NPHP4. AA range:877-926
Specificity	Nephrocystin-4 Polyclonal Antibody detects endogenous levels of Nephrocystin-4 protein.
Formulation	Liquid in PBS containing 50% glycerol, 0.5% BSA and 0.02% sodium azide..
Storage	Store at -20°C. Avoid repeated freeze-thaw cycles.
Protein Name	Nephrocystin-4
Gene Name	NPHP4
Cellular localization	Cytoplasm, cytoskeleton, cilium basal body . Cytoplasm, cytoskeleton, microtubule organizing center, centrosome . Cell junction, tight junction . Nucleus . In cultured renal cells, it localizes diffusely in the cytoplasm but, as cells approach confluence, it accumulates to basolateral tight junctions (By similarity). Localizes to the ciliary transition zone (By similarity). In the retinal photoreceptor cell layer, localizes at the connecting cilium (By similarity). .

Purification	The antibody was affinity-purified from rabbit antiserum by affinity-chromatography using epitope-specific immunogen.
Clonality	Polyclonal
Concentration	1 mg/ml
Observed band	
Human Gene ID	261734
Human Swiss-Prot Number	O75161
Alternative Names	NPHP4; KIAA0673; Nephrocystin-4; Nephroretinin

Background This gene encodes a protein involved in renal tubular development and function. This protein interacts with nephrocystin, and belongs to a multifunctional complex that is localized to actin- and microtubule-based structures. Mutations in this gene are associated with nephronophthisis type 4, a renal disease, and with Senior-Loken syndrome type 4, a combination of nephronophthisis and retinitis pigmentosa. Alternative splicing results in multiple transcript variants. [provided by RefSeq, Apr 2014],



Immunohistochemistry analysis of paraffin-embedded human brain, using NPHP4 Antibody. The picture on the right is blocked with the synthesized peptide.