

DECR2 rabbit pAb

Cat#: orb768339 (Manual)

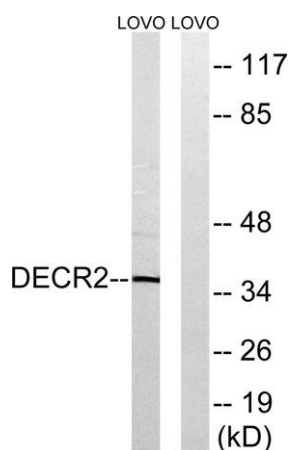
For research use only. Not intended for diagnostic use.

Product Name	DECR2 rabbit pAb
Host species	Rabbit
Applications	WB;ELISA
Species Cross-Reactivity	Human;Mouse;Rat
Recommended dilutions	Western Blot: 1/500 - 1/2000. ELISA: 1/10000. Not yet tested in other applications.
Immunogen	The antiserum was produced against synthesized peptide derived from human DECR2. AA range:217-266
Specificity	DECR2 Polyclonal Antibody detects endogenous levels of DECR2 protein.
Formulation	Liquid in PBS containing 50% glycerol, 0.5% BSA and 0.02% sodium azide..
Storage	Store at -20°C. Avoid repeated freeze-thaw cycles.
Protein Name	Peroxisomal 2,4-dienoyl-CoA reductase
Gene Name	DECR2
Cellular localization	Peroxisome .
Purification	The antibody was affinity-purified from rabbit antiserum by affinity-chromatography using epitope-specific immunogen.
Clonality	Polyclonal

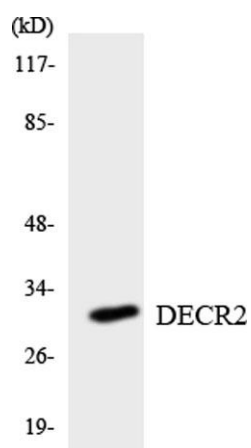
Concentration	1 mg/ml
Observed band	36kD
Human Gene ID	26063
Human Swiss-Prot Number	Q9NUI1
Alternative Names	DECR2; PDCR; Peroxisomal 2; 4-dienoyl-CoA reductase; pDCR; 2,4-dienoyl-CoA reductase 2

Background

catalytic activity: Trans-2,3-didehydroacyl-CoA + NADP(+) = trans,trans-2,3,4,5-tetrahydroacyl-CoA + NADPH.,function: Auxiliary enzyme of beta-oxidation. Participates in the degradation of unsaturated fatty enoyl-CoA esters having double bonds in both even- and odd-numbered positions in peroxisome. Catalyzes the NADP-dependent reduction of 2,4-dienoyl-CoA to yield trans-3-enoyl-CoA. Has activity towards short and medium chain 2,4-dienoyl-CoAs, but also towards 2,4,7,10,13,16,19-docosaheptaenoyl-CoA, suggesting that it does not constitute a rate limiting step in the peroxisomal degradation of docosaheptaenoic acid.,similarity: Belongs to the short-chain dehydrogenases/reductases (SDR) family.,similarity: Belongs to the short-chain dehydrogenases/reductases (SDR) family. 2,4-dienoyl-CoA reductase subfamily.,



Western blot analysis of lysates from LOVO cells, using DECR2 Antibody. The lane on the right is blocked with the synthesized peptide.



Western blot analysis of the lysates from HepG2 cells using DECRC2 antibody.