

TIMAP rabbit pAb**Cat#: orb768337 (Manual)**

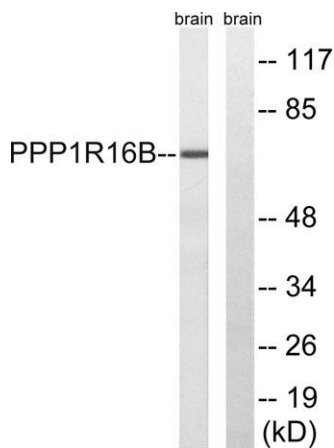
For research use only. Not intended for diagnostic use.

| | |
|---------------------------------|---|
| Product Name | TIMAP rabbit pAb |
| Host species | Rabbit |
| Applications | WB;IHC |
| Species Cross-Reactivity | Human;Mouse |
| Recommended dilutions | WB 1:500-2000;IHC-p 1:50-300 |
| Immunogen | The antiserum was produced against synthesized peptide derived from human PPP1R16B. AA range:364-413 |
| Specificity | TIMAP Polyclonal Antibody detects endogenous levels of TIMAP protein. |
| Formulation | Liquid in PBS containing 50% glycerol, 0.5% BSA and 0.02% sodium azide.. |
| Storage | Store at -20°C. Avoid repeated freeze-thaw cycles. |
| Protein Name | Protein phosphatase 1 regulatory inhibitor subunit 16B |
| Gene Name | PPP1R16B |
| Cellular localization | Cell membrane . Cell membrane ; Lipid-anchor . Nucleus . Cell projection . Colocalizes with RPSA/LAMR1 in the cell membrane (PubMed:16263087). Localizes to the perinuclear region (By similarity). Colocalizes with PTEN at the tip of EC projections (PubMed: |
| Purification | The antibody was affinity-purified from rabbit antiserum by affinity-chromatography using epitope-specific immunogen. |

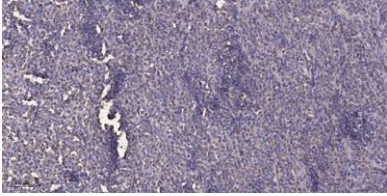
| | |
|--------------------------------|--|
| Clonality | Polyclonal |
| Concentration | 1 mg/ml |
| Observed band | 64kD |
| Human Gene ID | 26051 |
| Human Swiss-Prot Number | Q96T49 |
| Alternative Names | PPP1R16B; ANKRD4; KIAA0823; Protein phosphatase 1 regulatory inhibitor subunit 16B; Ankyrin repeat domain-containing protein 4; CAAX box protein TIMAP; TGF-beta-inhibited membrane-associated protein; hTIMAP |

Background

The protein encoded by this gene is membrane-associated and contains five ankyrin repeats, a protein phosphatase-1-interacting domain, and a carboxy-terminal CAAX box domain. Synthesis of the encoded protein is inhibited by transforming growth factor beta-1. The protein may bind to the membrane through its CAAX box domain and may act as a signaling molecule through interaction with protein phosphatase-1. Alternative splicing results in multiple transcript variants encoding different isoforms that may undergo similar processing to generate mature protein. [provided by RefSeq, Sep 2015],



Western blot analysis of lysates from mouse brain, using PPP1R16B Antibody. The lane on the right is blocked with the synthesized peptide.



Immunohistochemical analysis of paraffin-embedded human Colon cancer. 1, Antibody was diluted at 1:200(4° overnight). 2, Tris-EDTA,pH9.0 was used for antigen retrieval. 3,Secondary antibody was diluted at 1:200(room temperature, 45min).