

**CYP4X1 rabbit pAb****Cat#: orb768335 (Manual)**

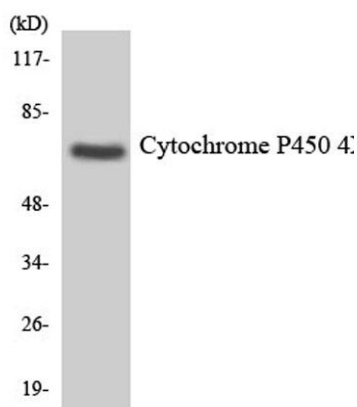
For research use only. Not intended for diagnostic use.

<b>Product Name</b>	CYP4X1 rabbit pAb
<b>Host species</b>	Rabbit
<b>Applications</b>	WB;ELISA
<b>Species Cross-Reactivity</b>	Human;Rat;Mouse;
<b>Recommended dilutions</b>	Western Blot: 1/500 - 1/2000. ELISA: 1/10000. Not yet tested in other applications.
<b>Immunogen</b>	The antiserum was produced against synthesized peptide derived from human Cytochrome P450 4X1. AA range:231-280
<b>Specificity</b>	CYP4X1 Polyclonal Antibody detects endogenous levels of CYP4X1 protein.
<b>Formulation</b>	Liquid in PBS containing 50% glycerol, 0.5% BSA and 0.02% sodium azide..
<b>Storage</b>	Store at -20°C. Avoid repeated freeze-thaw cycles.
<b>Protein Name</b>	Cytochrome P450 4X1
<b>Gene Name</b>	CYP4X1
<b>Cellular localization</b>	Endoplasmic reticulum membrane ; Single-pass membrane protein . Microsome membrane ; Single-pass membrane protein .
<b>Purification</b>	The antibody was affinity-purified from rabbit antiserum by affinity-chromatography using       epitope-specific immunogen.
<b>Clonality</b>	Polyclonal

<b>Concentration</b>	1 mg/ml
<b>Observed band</b>	60kD
<b>Human Gene ID</b>	260293
<b>Human Swiss-Prot Number</b>	Q8N118
<b>Alternative Names</b>	CYP4X1; Cytochrome P450 4X1; CYP4X1

### Background

This gene encodes a member of the cytochrome P450 superfamily of enzymes and is located within a cluster of genes belonging to this superfamily on chromosome 1. The cytochrome P450 proteins are monooxygenases which catalyze many reactions involved in drug metabolism and synthesis of cholesterol, steroids and other lipids. The expression pattern of a similar rat protein suggests that this protein may be involved in neurovascular function in the brain. Alternative splicing results in multiple transcript variants. [provided by RefSeq, Feb 2016],



**Western blot analysis of the lysates from HeLa cells using Cytochrome P450 4X1 antibody.**