

GPR124 rabbit pAb

Cat#: orb768332 (Manual)

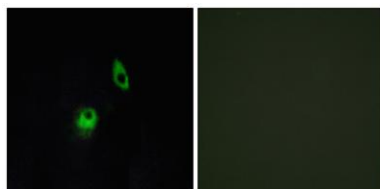
For research use only. Not intended for diagnostic use.

Product Name	GPR124 rabbit pAb
Host species	Rabbit
Applications	WB;IF;ELISA
Species Cross-Reactivity	Human;Mouse
Recommended dilutions	Western Blot: 1/500 - 1/2000. Immunofluorescence: 1/200 - 1/1000. ELISA: 1/10000. Not yet tested in other applications.
Immunogen	The antiserum was produced against synthesized peptide derived from human GPR124. AA range:1151-1200
Specificity	GPR124 Polyclonal Antibody detects endogenous levels of GPR124 protein.
Formulation	Liquid in PBS containing 50% glycerol, 0.5% BSA and 0.02% sodium azide..
Storage	Store at -20°C. Avoid repeated freeze-thaw cycles.
Protein Name	G-protein coupled receptor 124
Gene Name	GPR124
Cellular localization	Cell membrane ; Multi-pass membrane protein . Cell projection, filopodium . Enriched at lateral cell borders and also at sites of cell-ECM (extracellular matrix) contact. .
Purification	The antibody was affinity-purified from rabbit antiserum by affinity-chromatography using epitope-specific immunogen.

Clonality	Polyclonal
Concentration	1 mg/ml
Observed band	145kD
Human Gene ID	25960
Human Swiss-Prot Number	Q96PE1
Alternative Names	GPR124; KIAA1531; TEM5; G-protein coupled receptor 124; Tumor endothelial marker 5

Background

caution:It is uncertain whether Met-1 or Met-8 is the initiator.,domain:Binds to DLG1 through its PDZ-binding motif.,function:Orphan receptor.,similarity:Belongs to the G-protein coupled receptor 2 family. LN-TM7 subfamily.,similarity:Contains 1 GPS domain.,similarity:Contains 1 Ig-like (immunoglobulin-like) domain.,similarity:Contains 5 LRR (leucine-rich) repeats.,subunit:Interacts with DLG1.,tissue specificity:Expressed in endothelial cells (at protein level). Abundantly expressed in tumor vessels, heart, placenta, ovary, small intestine, and colon.,



Immunofluorescence analysis of HeLa cells, using GPR124 Antibody. The picture on the right is blocked with the synthesized peptide.