

**T2R49 rabbit pAb****Cat#: orb768328 (Manual)**

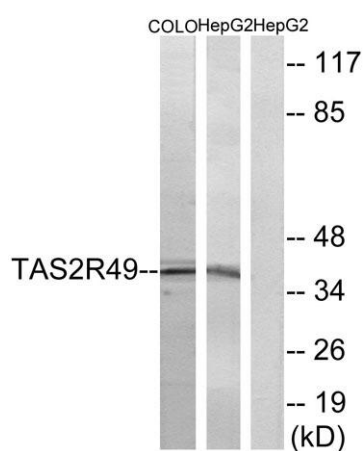
For research use only. Not intended for diagnostic use.

<b>Product Name</b>	T2R49 rabbit pAb
<b>Host species</b>	Rabbit
<b>Applications</b>	WB;IF;ELISA
<b>Species Cross-Reactivity</b>	Human;Rat;Mouse;
<b>Recommended dilutions</b>	Western Blot: 1/500 - 1/2000. Immunofluorescence: 1/200 - 1/1000. ELISA: 1/20000. Not yet tested in other applications.
<b>Immunogen</b>	The antiserum was produced against synthesized peptide derived from human TAS2R49. AA range:94-143
<b>Specificity</b>	T2R49 Polyclonal Antibody detects endogenous levels of T2R49 protein.
<b>Formulation</b>	Liquid in PBS containing 50% glycerol, 0.5% BSA and 0.02% sodium azide..
<b>Storage</b>	Store at -20°C. Avoid repeated freeze-thaw cycles.
<b>Protein Name</b>	Taste receptor type 2 member 20
<b>Gene Name</b>	TAS2R20
<b>Cellular localization</b>	Membrane; Multi-pass membrane protein.
<b>Purification</b>	The antibody was affinity-purified from rabbit antiserum by affinity-chromatography using epitope-specific immunogen.
<b>Clonality</b>	Polyclonal

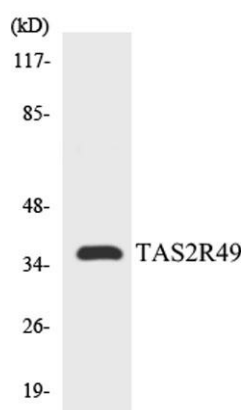
<b>Concentration</b>	1 mg/ml
<b>Observed band</b>	38kD
<b>Human Gene ID</b>	259295
<b>Human Swiss-Prot Number</b>	P59543
<b>Alternative Names</b>	TAS2R20; TAS2R49; Taste receptor type 2 member 20; Taste receptor type 2 member 49; T2R49; Taste receptor type 2 member 56; T2R56

### Background

This gene encodes a member of the taste receptor two family of class C G-protein coupled receptors. Receptors of this family have a short extracellular N-terminus, seven transmembrane helices, three extracellular loops and three intracellular loops, and an intracellular C-terminus. Members of this family are expressed in a subset of taste receptor cells, where they function in bitter taste reception, as well as in non-gustatory cells including those of the brain, reproductive organs, respiratory system, and gastrointestinal system. This gene maps to the taste receptor gene cluster on chromosome 12p13. [provided by RefSeq, Jul 2016],



**Western blot analysis of lysates from COLO and HepG2 cells, using TAS2R49 Antibody. The lane on the right is blocked with the synthesized peptide.**



**Western blot analysis of the lysates from COLO205 cells using TAS2R49 antibody.**



Explore. Bioreagents.

[www.biorbyt.com](http://www.biorbyt.com)

Biorbyt Ltd  
7 Signet Court, Swann Road, Cambridge, CB5 8LA. United Kingdom  
Email: [info@biorbyt.com](mailto:info@biorbyt.com) | Phone: +44 (0)1223 859-353 | Fax: +44 (0)1223 280-240

Biorbyt LLC  
68 TW Alexander Drive, Durham, NC 27709. United States  
Email: [info@biorbyt.com](mailto:info@biorbyt.com) | Phone: +1 (415) 906-5211 | Fax: +1 (415) 651-8558