

T2R48 rabbit pAb**Cat#: orb768327 (Manual)**

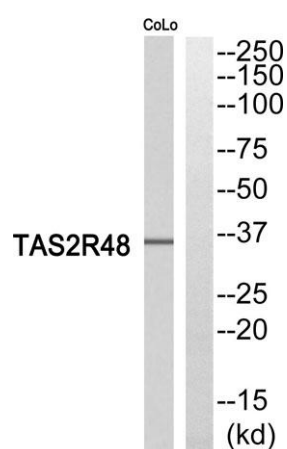
For research use only. Not intended for diagnostic use.

Product Name	T2R48 rabbit pAb
Host species	Rabbit
Applications	WB;ELISA
Species Cross-Reactivity	Human;Rat;Mouse;
Recommended dilutions	Western Blot: 1/500 - 1/2000. ELISA: 1/20000. Not yet tested in other applications.
Immunogen	The antiserum was produced against synthesized peptide derived from human TAS2R48. AA range:90-139
Specificity	T2R48 Polyclonal Antibody detects endogenous levels of T2R48 protein.
Formulation	Liquid in PBS containing 50% glycerol, 0.5% BSA and 0.02% sodium azide..
Storage	Store at -20°C. Avoid repeated freeze-thaw cycles.
Protein Name	Taste receptor type 2 member 19
Gene Name	TAS2R19
Cellular localization	Membrane; Multi-pass membrane protein.
Purification	The antibody was affinity-purified from rabbit antiserum by affinity-chromatography using epitope-specific immunogen.
Clonality	Polyclonal

Concentration	1 mg/ml
Observed band	
Human Gene ID	259294
Human Swiss-Prot Number	P59542
Alternative Names	TAS2R19; TAS2R23; TAS2R48; Taste receptor type 2 member 19; Taste receptor type 2 member 23; Taste receptor type 2 member 48; T2R48

Background

function: Receptor that may play a role in the perception of bitterness and is gustducin-linked. May play a role in sensing the chemical composition of the gastrointestinal content. The activity of this receptor may stimulate alpha gustducin, mediate PLC-beta-2 activation and lead to the gating of TRPM5. miscellaneous: Most taste cells may be activated by a limited number of bitter compounds; individual taste cells can discriminate among bitter stimuli. similarity: Belongs to the G-protein coupled receptor T2R family. tissue specificity: Expressed in subsets of taste receptor cells of the tongue and exclusively in gustducin-positive cells.



Western blot analysis of TAS2R48 Antibody. The lane on the right is blocked with the TAS2R48 peptide.