

T2R43 rabbit pAb**Cat#: orb768325 (Manual)**

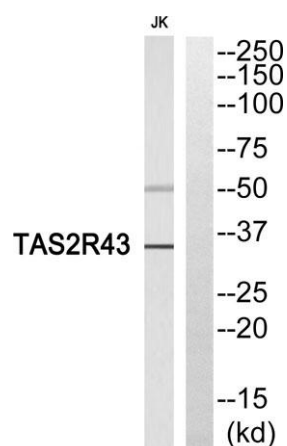
For research use only. Not intended for diagnostic use.

Product Name	T2R43 rabbit pAb
Host species	Rabbit
Applications	WB;ELISA
Species Cross-Reactivity	Human;Rat;Mouse;
Recommended dilutions	Western Blot: 1/500 - 1/2000. ELISA: 1/20000. Not yet tested in other applications.
Immunogen	The antiserum was produced against synthesized peptide derived from human TAS2R43. AA range:124-173
Specificity	T2R43 Polyclonal Antibody detects endogenous levels of T2R43 protein.
Formulation	Liquid in PBS containing 50% glycerol, 0.5% BSA and 0.02% sodium azide..
Storage	Store at -20°C. Avoid repeated freeze-thaw cycles.
Protein Name	Taste receptor type 2 member 43
Gene Name	TAS2R43
Cellular localization	Membrane ; Multi-pass membrane protein . Cell projection, cilium membrane . In airway epithelial cells, localizes to motile cilia.
Purification	The antibody was affinity-purified from rabbit antiserum by affinity-chromatography using epitope-specific immunogen.
Clonality	Polyclonal

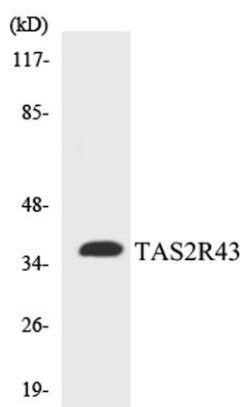
Concentration	1 mg/ml
Observed band	35kD
Human Gene ID	259289
Human Swiss-Prot Number	P59537
Alternative Names	TAS2R43; Taste receptor type 2 member 43; T2R43; Taste receptor type 2 member 52; T2R52

Background

TAS2R43 belongs to the large TAS2R receptor family. TAS2Rs are expressed on the surface of taste receptor cells and mediate the perception of bitterness through a G protein-coupled second messenger pathway (Conte et al., 2002 [PubMed 12584440]). For further information on TAS2Rs, see MIM 604791.[supplied by OMIM, Mar 2009],



Western blot analysis of TAS2R43 Antibody. The lane on the right is blocked with the TAS2R43 peptide.



Western blot analysis of the lysates from COLO205 cells using TAS2R43 antibody.