

**MRGX1 rabbit pAb****Cat#: orb768324 (Manual)**

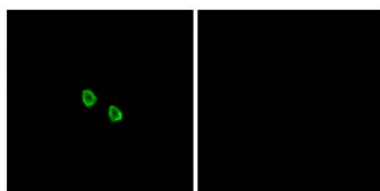
For research use only. Not intended for diagnostic use.

<b>Product Name</b>	MRGX1 rabbit pAb
<b>Host species</b>	Rabbit
<b>Applications</b>	WB;IHC
<b>Species Cross-Reactivity</b>	Human;Rat;Mouse;
<b>Recommended dilutions</b>	WB 1:500-2000;IHC-p 1:50-300
<b>Immunogen</b>	The antiserum was produced against synthesized peptide derived from human MRGX1. AA range:271-320
<b>Specificity</b>	MRGX1 Polyclonal Antibody detects endogenous levels of MRGX1 protein.
<b>Formulation</b>	Liquid in PBS containing 50% glycerol, 0.5% BSA and 0.02% sodium azide..
<b>Storage</b>	Store at -20°C. Avoid repeated freeze-thaw cycles.
<b>Protein Name</b>	Mas-related G-protein coupled receptor member X1
<b>Gene Name</b>	MRGPRX1
<b>Cellular localization</b>	Cell membrane; Multi-pass membrane protein.
<b>Purification</b>	The antibody was affinity-purified from rabbit antiserum by affinity-chromatography using epitope-specific immunogen.
<b>Clonality</b>	Polyclonal

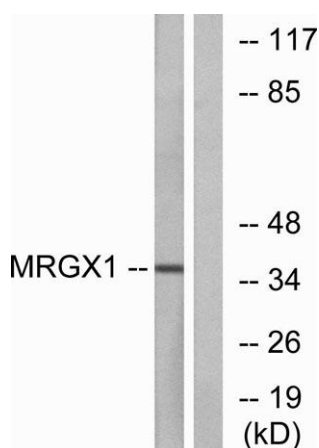
<b>Concentration</b>	1 mg/ml
<b>Observed band</b>	36kD
<b>Human Gene ID</b>	259249
<b>Human Swiss-Prot Number</b>	Q96LB2
<b>Alternative Names</b>	MRGPRX1; MRGX1; SNSR3; SNSR4; Mas-related G-protein coupled receptor member X1; Sensory neuron-specific G-protein coupled receptor 3/4

### Background

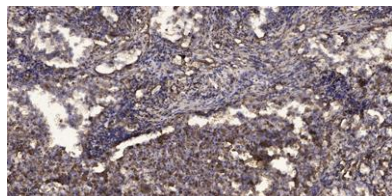
function:Orphan receptor. Probably involved in the function of nociceptive neurons. May regulate nociceptor function and/or development, including the sensation or modulation of pain. Potently activated by enkephalins including BAM22 (bovine adrenal medulla peptide 22) and BAM (8-22). BAM22 is the most potent compound and evoked a large and dose-dependent release of intracellular calcium in stably transfected cells. G(alpha)q proteins are involved in the calcium-signaling pathway.,similarity:Belongs to the G-protein coupled receptor 1 family. Mas subfamily.,tissue specificity:Uniquely localized in a subset of small dorsal root and trigeminal sensory neurons.,



**Immunofluorescence analysis of HepG2 cells, using MRGX1 Antibody. The picture on the right is blocked with the synthesized peptide.**



**Western blot analysis of lysates from MCF-7 cells, using MRGX1 Antibody. The lane on the right is blocked with the synthesized peptide.**



**Immunohistochemical analysis of paraffin-embedded human Squamous cell carcinoma of lung. 1, Antibody was diluted at 1:200(4° overnight). 2, Tris-EDTA,pH9.0 was used for antigen retrieval. 3,Secondary antibody was diluted at 1:200(room temperature, 45min).**