

NKp30 rabbit pAb**Cat#: orb768323 (Manual)**

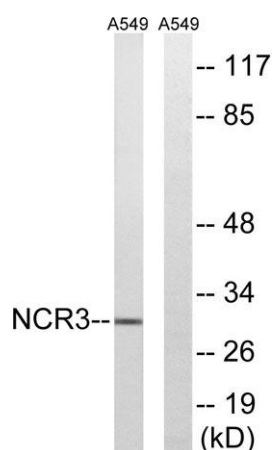
For research use only. Not intended for diagnostic use.

Product Name	NKp30 rabbit pAb
Host species	Rabbit
Applications	WB;ELISA
Species Cross-Reactivity	Human;Rat
Recommended dilutions	Western Blot: 1/500 - 1/2000. ELISA: 1/40000. Not yet tested in other applications.
Immunogen	The antiserum was produced against synthesized peptide derived from human NCR3. AA range:104-153
Specificity	NKp30 Polyclonal Antibody detects endogenous levels of NKp30 protein.
Formulation	Liquid in PBS containing 50% glycerol, 0.5% BSA and 0.02% sodium azide..
Storage	Store at -20°C. Avoid repeated freeze-thaw cycles.
Protein Name	Natural cytotoxicity triggering receptor 3
Gene Name	NCR3
Cellular localization	Cell membrane ; Single-pass type I membrane protein .
Purification	The antibody was affinity-purified from rabbit antiserum by affinity-chromatography using epitope-specific immunogen.
Clonality	Polyclonal

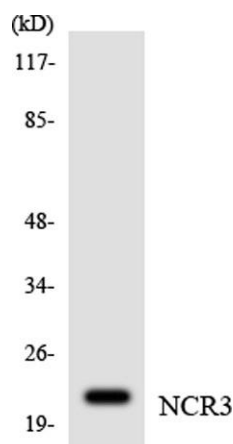
Concentration	1 mg/ml
Observed band	30kD
Human Gene ID	259197
Human Swiss-Prot Number	O14931
Alternative Names	NCR3; 1C7; LY117; Natural cytotoxicity triggering receptor 3; Activating natural killer receptor p30; Natural killer cell p30-related protein; NK-p30; NKp30; CD antigen CD337

Background

The protein encoded by this gene is a natural cytotoxicity receptor (NCR) that may aid NK cells in the lysis of tumor cells. The encoded protein interacts with CD3-zeta (CD247), a T-cell receptor. A single nucleotide polymorphism in the 5' untranslated region of this gene has been associated with mild malaria susceptibility. Three transcript variants encoding different isoforms have been found for this gene.[provided by RefSeq, May 2010],



Western blot analysis of lysates from A549 cells, using NCR3 Antibody. The lane on the right is blocked with the synthesized peptide.



Western blot analysis of the lysates from K562 cells using NCR3 antibody.