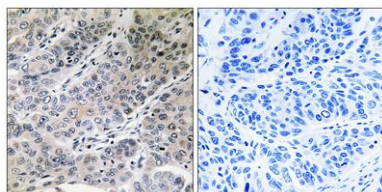


Brp44 rabbit pAb**Cat#: orb768320 (Manual)**

For research use only. Not intended for diagnostic use.

Product Name	Brp44 rabbit pAb
Host species	Rabbit
Applications	IHC;IF;ELISA
Species Cross-Reactivity	Human;Mouse;Rat
Recommended dilutions	Immunohistochemistry: 1/100 - 1/300. ELISA: 1/40000. Not yet tested in other applications.
Immunogen	The antiserum was produced against synthesized peptide derived from human BRP44. AA range:31-80
Specificity	Brp44 Polyclonal Antibody detects endogenous levels of Brp44 protein.
Formulation	Liquid in PBS containing 50% glycerol, 0.5% BSA and 0.02% sodium azide..
Storage	Store at -20°C. Avoid repeated freeze-thaw cycles.
Protein Name	Mitochondrial pyruvate carrier 2
Gene Name	MPC2
Cellular localization	Mitochondrion inner membrane ; Multi-pass membrane protein .
Purification	The antibody was affinity-purified from rabbit antiserum by affinity-chromatography using epitope-specific immunogen.
Clonality	Polyclonal

Concentration	1 mg/ml
Observed band	
Human Gene ID	25874
Human Swiss-Prot Number	O95563
Alternative Names	MPC2; BRP44; Mitochondrial pyruvate carrier 2; Brain protein 44
Background	similarity:Belongs to the UPF0041 (0-44) family.,



Immunohistochemistry analysis of paraffin-embedded human lung carcinoma tissue, using BRP44 Antibody. The picture on the right is blocked with the synthesized peptide.