

Ameloblastin rabbit pAb**Cat#: orb768314 (Manual)**

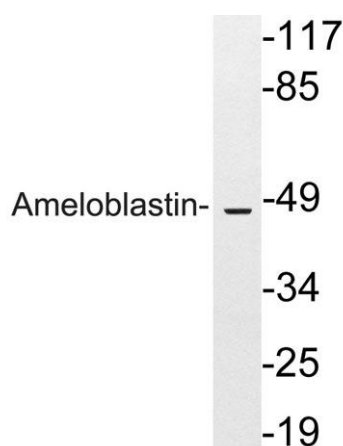
For research use only. Not intended for diagnostic use.

Product Name	Ameloblastin rabbit pAb
Host species	Rabbit
Applications	WB;ELISA
Species Cross-Reactivity	Human;Rat;Mouse;
Recommended dilutions	Western Blot: 1/500 - 1/2000. ELISA: 1/10000. Not yet tested in other applications.
Immunogen	The antiserum was produced against synthesized peptide derived from human Ameloblastin. AA range:275-324
Specificity	Ameloblastin Polyclonal Antibody detects endogenous levels of Ameloblastin protein.
Formulation	Liquid in PBS containing 50% glycerol, 0.5% BSA and 0.02% sodium azide..
Storage	Store at -20°C. Avoid repeated freeze-thaw cycles.
Protein Name	Ameloblastin
Gene Name	AMBN
Cellular localization	Secreted, extracellular space, extracellular matrix.
Purification	The antibody was affinity-purified from rabbit antiserum by affinity-chromatography using epitope-specific immunogen.
Clonality	Polyclonal

Concentration	1 mg/ml
Observed band	48kD
Human Gene ID	258
Human Swiss-Prot Number	Q9NP70
Alternative Names	AMBN; Ameloblastin

Background

This gene encodes the nonamelogenin enamel matrix protein ameloblastin. The encoded protein may be important in enamel matrix formation and mineralization. This gene is located in the calcium-binding phosphoprotein gene cluster on chromosome 4. Mutations in this gene may be associated with dentinogenesis imperfect and autosomal dominant amylogenesis imperfect. [provided by RefSeq, Aug 2011],



Western blot analysis of lysates from HeLa cells, using Ameloblastin antibody.