

## Sck rabbit pAb

**Cat#: orb768312 (Manual)**

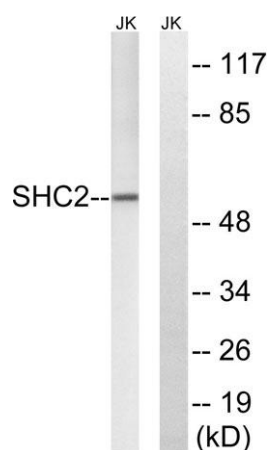
For research use only. Not intended for diagnostic use.

<b>Product Name</b>	Sck rabbit pAb
<b>Host species</b>	Rabbit
<b>Applications</b>	WB;IHC
<b>Species Cross-Reactivity</b>	Human;Rat
<b>Recommended dilutions</b>	WB 1:500-2000;IHC-p 1:50-300
<b>Immunogen</b>	The antiserum was produced against synthesized peptide derived from human SHC2. AA range:261-310
<b>Specificity</b>	Sck Polyclonal Antibody detects endogenous levels of Sck protein.
<b>Formulation</b>	Liquid in PBS containing 50% glycerol, 0.5% BSA and 0.02% sodium azide..
<b>Storage</b>	Store at -20°C. Avoid repeated freeze-thaw cycles.
<b>Protein Name</b>	SHC-transforming protein 2
<b>Gene Name</b>	SHC2
<b>Cellular localization</b>	intracellular,cytosol,plasma membrane,
<b>Purification</b>	The antibody was affinity-purified from rabbit antiserum by affinity-chromatography using epitope-specific immunogen.
<b>Clonality</b>	Polyclonal

<b>Concentration</b>	1 mg/ml
<b>Observed band</b>	59kD
<b>Human Gene ID</b>	25759
<b>Human Swiss-Prot Number</b>	P98077
<b>Alternative Names</b>	SHC2; SCK; SHCB; SHC-transforming protein 2; Protein Sck; SHC-transforming protein B; Src homology 2 domain-containing-transforming protein C2; SH2 domain protein C2

**Background**

domain:The PID domain mediates binding to the TrkA receptor.,function:Signaling adapter that couples activated growth factor receptors to signaling pathway in neurons. Involved in the signal transduction pathways of neurotrophin-activated Trk receptors in cortical neurons.,miscellaneous:PubMed:15057824 has shown that SHC2 is poorly phosphorylated by the Trk receptors, in opposite to PubMed:12006576.,PTM:Phosphorylated on tyrosines by the Trk receptors.,similarity:Contains 1 PID domain.,similarity:Contains 1 SH2 domain.,subunit:Interacts with the Trk receptors in a phosphotyrosine-dependent manner and MEGF12. Once activated, binds to GRB2.,tissue specificity:Expressed in brain. Expressed at high level in the hypothalamus and at low level in the caudate nucleus.,



Western blot analysis of lysates from Jurkat cells, using SHC2 Antibody. The lane on the right is blocked with the synthesized peptide.



**Immunohistochemical analysis of paraffin-embedded human tonsil. 1, Antibody was diluted at 1:200(4° overnight). 2, Tris-EDTA,pH9.0 was used for antigen retrieval. 3,Secondary antibody was diluted at 1:200(room temperature, 45min).**