

## GABAA R $\gamma$ 1 rabbit pAb

**Cat#: orb768309 (Manual)**

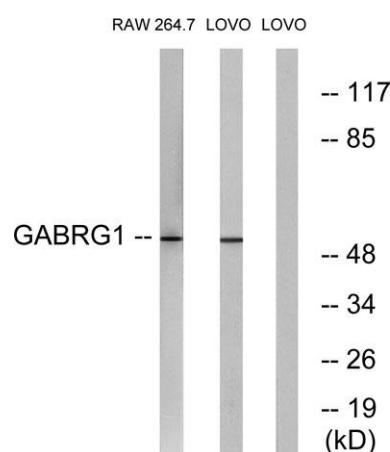
For research use only. Not intended for diagnostic use.

<b>Product Name</b>	GABAA R $\gamma$ 1 rabbit pAb
<b>Host species</b>	Rabbit
<b>Applications</b>	WB;IHC;IF;ELISA
<b>Species Cross-Reactivity</b>	Human;Mouse;Rat
<b>Recommended dilutions</b>	Western Blot: 1/500 - 1/2000. Immunohistochemistry: 1/100 - 1/300. ELISA: 1/20000. Not yet tested in other applications.
<b>Immunogen</b>	The antiserum was produced against synthesized peptide derived from human GABRG1. AA range:11-60
<b>Specificity</b>	GABAA R $\gamma$ 1 Polyclonal Antibody detects endogenous levels of GABAA R $\gamma$ 1 protein.
<b>Formulation</b>	Liquid in PBS containing 50% glycerol, 0.5% BSA and 0.02% sodium azide..
<b>Storage</b>	Store at -20°C. Avoid repeated freeze-thaw cycles.
<b>Protein Name</b>	Gamma-aminobutyric acid receptor subunit gamma-1
<b>Gene Name</b>	GABRG1
<b>Cellular localization</b>	Cell junction, synapse, postsynaptic cell membrane; Multi-pass membrane protein. Cell membrane; Multi-pass membrane protein.
<b>Purification</b>	The antibody was affinity-purified from rabbit antiserum by affinity-chromatography using epitope-specific immunogen.
<b>Clonality</b>	Polyclonal

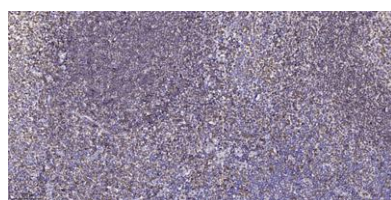
<b>Concentration</b>	1 mg/ml
<b>Observed band</b>	54kD
<b>Human Gene ID</b>	2565
<b>Human Swiss-Prot Number</b>	Q8N1C3
<b>Alternative Names</b>	GABRG1; Gamma-aminobutyric acid receptor subunit gamma-1; GABA(A) receptor subunit gamma-1

### Background

The protein encoded by this gene belongs to the ligand-gated ionic channel family. It is an integral membrane protein and plays an important role in inhibiting neurotransmission by binding to the benzodiazepine receptor and opening an integral chloride channel. This gene is clustered with three other family members on chromosome 4. [provided by RefSeq, Jul 2008],



Western blot analysis of lysates from LOVO and RAW264.7 cells, using GABRG1 Antibody. The lane on the right is blocked with the synthesized peptide.



Immunohistochemical analysis of paraffin-embedded human tonsil. 1, Antibody was diluted at 1:200(4° overnight). 2, Tris-EDTA,pH9.0 was used for antigen retrieval. 3,Secondary antibody was diluted at 1:200(room temperature, 45min).