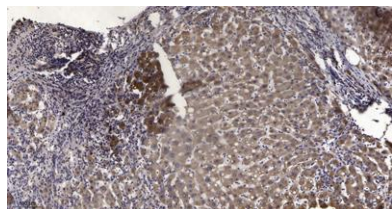


FUT2 rabbit pAb**Cat#: orb768286 (Manual)**

For research use only. Not intended for diagnostic use.

Product Name	FUT2 rabbit pAb
Host species	Rabbit
Applications	IHC;IF;ELISA
Species Cross-Reactivity	Human;Rat;Mouse;
Recommended dilutions	Immunohistochemistry: 1/100 - 1/300. ELISA: 1/20000. Not yet tested in other applications.
Immunogen	Synthesized peptide derived from the Internal region of human FUT2.
Specificity	FUT2 Polyclonal Antibody detects endogenous levels of FUT2 protein.
Formulation	Liquid in PBS containing 50% glycerol, 0.5% BSA and 0.02% sodium azide..
Storage	Store at -20°C. Avoid repeated freeze-thaw cycles.
Protein Name	Galactoside 2-alpha-L-fucosyltransferase 2
Gene Name	FUT2
Cellular localization	Golgi apparatus, Golgi stack membrane; Single-pass type II membrane protein. Membrane-bound form in trans cisternae of Golgi.
Purification	The antibody was affinity-purified from rabbit antiserum by affinity-chromatography using epitope-specific immunogen.
Clonality	Polyclonal

Concentration	1 mg/ml
Observed band	
Human Gene ID	2524
Human Swiss-Prot Number	Q10981
Alternative Names	FUT2; SEC2; Galactoside 2-alpha-L-fucosyltransferase 2; Alpha(1; 2)FT 2; Fucosyltransferase 2; GDP-L-fucose:beta-D-galactoside 2-alpha-L-fucosyltransferase 2; SE2; Secretor blood group alpha-2-fucosyltransferase; Secretor factor; Se
Background	The protein encoded by this gene is a Golgi stack membrane protein that is involved in the creation of a precursor of the H antigen, which is required for the final step in the soluble A and B antigen synthesis pathway. This gene is one of two encoding the galactoside 2-L-fucosyltransferase enzyme. Two transcript variants encoding the same protein have been found for this gene. [provided by RefSeq, Jul 2008],



Immunohistochemical analysis of paraffin-embedded human liver cancer. 1, Antibody was diluted at 1:200(4° overnight). 2, Tris-EDTA,pH9.0 was used for antigen retrieval. 3,Secondary antibody was diluted at 1:200(room temperature, 45min).