

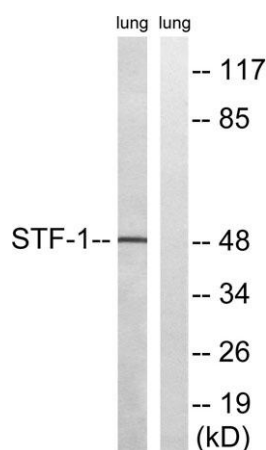
SF-1 rabbit pAb**Cat#: orb768284 (Manual)**

For research use only. Not intended for diagnostic use.

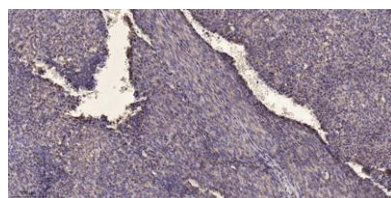
Product Name	SF-1 rabbit pAb
Host species	Rabbit
Applications	WB;ELISA;IHC
Species Cross-Reactivity	Human;Mouse;Rat
Recommended dilutions	WB 1:500-2000;IHC-p 1:50-300; ELISA 2000-20000
Immunogen	The antiserum was produced against synthesized peptide derived from human NR5A1. AA range:169-218
Specificity	SF-1 Polyclonal Antibody detects endogenous levels of SF-1 protein.
Formulation	Liquid in PBS containing 50% glycerol, 0.5% BSA and 0.02% sodium azide..
Storage	Store at -20°C. Avoid repeated freeze-thaw cycles.
Protein Name	Steroidogenic factor 1
Gene Name	NR5A1
Cellular localization	Nucleus .
Purification	The antibody was affinity-purified from rabbit antiserum by affinity-chromatography using epitope-specific immunogen.
Clonality	Polyclonal

Concentration	1 mg/ml
Observed band	50kD
Human Gene ID	2516
Human Swiss-Prot Number	Q13285
Alternative Names	NR5A1; AD4BP; FTZF1; SF1; Steroidogenic factor 1; SF-1; STF-1; Adrenal 4-binding protein; Fushi tarazu factor homolog 1; Nuclear receptor subfamily 5 group A member 1; Steroid hormone receptor Ad4BP

Background The protein encoded by this gene is a transcriptional activator involved in sex determination. The encoded protein binds DNA as a monomer. Defects in this gene are a cause of XY sex reversal with or without adrenal failure as well as adrenocortical insufficiency without ovarian defect. [provided by RefSeq, Jul 2008],



Western blot analysis of lysates from rat lung, using STF-1 Antibody. The lane on the right is blocked with the synthesized peptide.



Immunohistochemical analysis of paraffin-embedded human Colon cancer. 1, Antibody was diluted at 1:200(4° overnight). 2, Tris-EDTA,pH9.0 was used for antigen retrieval. 3,Secondary antibody was diluted at 1:200(room temperature, 45min).