

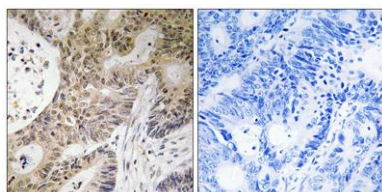
## PRP6 rabbit pAb

**Cat#: orb768269 (Manual)**

For research use only. Not intended for diagnostic use.

<b>Product Name</b>	PRP6 rabbit pAb
<b>Host species</b>	Rabbit
<b>Applications</b>	IHC;IF;WB;ELISA
<b>Species Cross-Reactivity</b>	Human;Mouse;Rat
<b>Recommended dilutions</b>	WB 1:500-2000 Immunohistochemistry: 1/100 - 1/300. ELISA: 1/10000. Not yet tested in other applications.
<b>Immunogen</b>	The antiserum was produced against synthesized peptide derived from human PRPF6. AA range:747-796
<b>Specificity</b>	PRP6 Polyclonal Antibody detects endogenous levels of PRP6 protein.
<b>Formulation</b>	Liquid in PBS containing 50% glycerol, 0.5% BSA and 0.02% sodium azide..
<b>Storage</b>	Store at -20°C. Avoid repeated freeze-thaw cycles.
<b>Protein Name</b>	Pre-mRNA-processing factor 6
<b>Gene Name</b>	PRPF6
<b>Cellular localization</b>	Nucleus, nucleoplasm . Nucleus speckle . Localized in splicing speckles. .
<b>Purification</b>	The antibody was affinity-purified from rabbit antiserum by affinity-chromatography using epitope-specific immunogen.
<b>Clonality</b>	Polyclonal

<b>Concentration</b>	1 mg/ml
<b>Observed band</b>	110kD
<b>Human Gene ID</b>	24148
<b>Human Swiss-Prot Number</b>	O94906
<b>Alternative Names</b>	PRPF6; C20orf14; Pre-mRNA-processing factor 6; Androgen receptor N-terminal domain-transactivating protein 1; ANT-1; PRP6 homolog; U5 snRNP-associated 102 kDa protein; U5-102 kDa protein
<b>Background</b>	The protein encoded by this gene appears to be involved in pre-mRNA splicing, possibly acting as a bridging factor between U5 and U4/U6 snRNPs in formation of the spliceosome. The encoded protein also can bind androgen receptor, providing a link between transcriptional activation and splicing. [provided by RefSeq, Jul 2008],



**Immunohistochemistry analysis of paraffin-embedded human colon carcinoma tissue, using PRPF6 Antibody. The picture on the right is blocked with the synthesized peptide.**