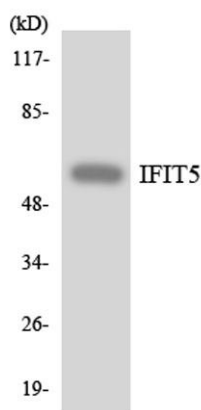


IFIT-5 rabbit pAb**Cat#: orb768268 (Manual)**

For research use only. Not intended for diagnostic use.

Product Name	IFIT-5 rabbit pAb
Host species	Rabbit
Applications	WB;ELISA
Species Cross-Reactivity	Human;Rat;Mouse;
Recommended dilutions	Western Blot: 1/500 - 1/2000. ELISA: 1/40000. Not yet tested in other applications.
Immunogen	The antiserum was produced against synthesized peptide derived from human IFIT5. AA range:281-330
Specificity	IFIT-5 Polyclonal Antibody detects endogenous levels of IFIT-5 protein.
Formulation	Liquid in PBS containing 50% glycerol, 0.5% BSA and 0.02% sodium azide..
Storage	Store at -20°C. Avoid repeated freeze-thaw cycles.
Protein Name	Interferon-induced protein with tetratricopeptide repeats 5
Gene Name	IFIT5
Cellular localization	Cell projection, ruffle membrane . Colocalized with DDX58/RIG-I at cell surface ruffles. Localizes to actin-rich protrusions from the apical cell surface.
Purification	The antibody was affinity-purified from rabbit antiserum by affinity-chromatography using epitope-specific immunogen.

Clonality	Polyclonal
Concentration	1 mg/ml
Observed band	50kD
Human Gene ID	24138
Human Swiss-Prot Number	Q13325
Alternative Names	IFIT5; ISG58; RI58; Interferon-induced protein with tetratricopeptide repeats 5; IFIT-5; Interferon-induced 58 kDa protein; Retinoic acid- and interferon-inducible 58 kDa protein; P58
Background	induction:By interferons.,similarity:Belongs to the IFIT family.,similarity:Contains 8 TPR repeats.,



Western blot analysis of the lysates from HepG2 cells using IFIT5 antibody.