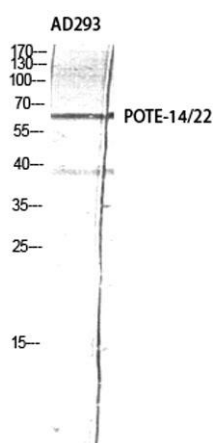


POTE-14/22 rabbit pAb**Cat#: orb768257 (Manual)**

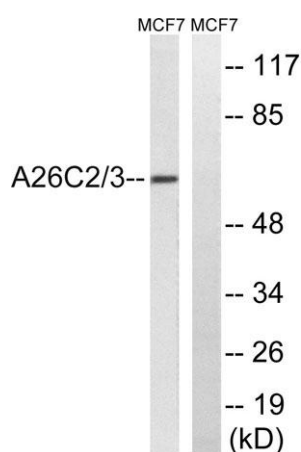
For research use only. Not intended for diagnostic use.

Product Name	POTE-14/22 rabbit pAb
Host species	Rabbit
Applications	WB;IHC;IF;ELISA
Species Cross-Reactivity	Human;Rat;Mouse;
Recommended dilutions	Western Blot: 1/500 - 1/2000. Immunohistochemistry: 1/100 - 1/300. ELISA: 1/40000. Not yet tested in other applications.
Immunogen	The antiserum was produced against synthesized peptide derived from human A26C2/3. AA range:178-227
Specificity	POTE-14/22 Polyclonal Antibody detects endogenous levels of POTE-14/22 protein.
Formulation	Liquid in PBS containing 50% glycerol, 0.5% BSA and 0.02% sodium azide..
Storage	Store at -20°C. Avoid repeated freeze-thaw cycles.
Protein Name	POTE ankyrin domain family member G/H
Gene Name	POTEG/POTEH
Cellular localization	integral component of membrane,
Purification	The antibody was affinity-purified from rabbit antiserum by affinity-chromatography using epitope-specific immunogen.
Clonality	Polyclonal

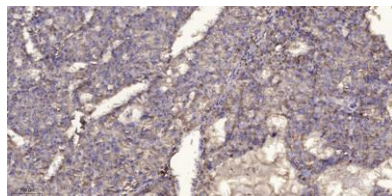
Concentration	1 mg/ml
Observed band	61kD
Human Gene ID	23784/404785
Human Swiss-Prot Number	Q6S545/Q6S5H5
Alternative Names	POTEH; A26C3; ACTBL1; POTE22; POTE ankyrin domain family member H; ANKRD26-like family C member 3; Prostate; ovary, testis-expressed protein on chromosome 22; POTE-22; POTE G; A26C2; POTE14; POTE ankyrin domain family member G; ANKRD26-like
Background	similarity:Belongs to the POTE family.,similarity:Contains 7 ANK repeats.,



Western Blot analysis of AD293 using POTE-14/22 Polyclonal Antibody diluted at 1:2000



Western blot analysis of lysates from MCF-7 cells, using A26C2/3 Antibody. The lane on the right is blocked with the synthesized peptide.



Immunohistochemical analysis of paraffin-embedded human liver cancer. 1, Antibody was diluted at 1:200(4° overnight). 2, Tris-EDTA,pH9.0 was used for antigen retrieval. 3,Secondary antibody was diluted at 1:200(room temperature, 45min).