

ZKSCAN5 rabbit pAb**Cat#: orb768252 (Manual)**

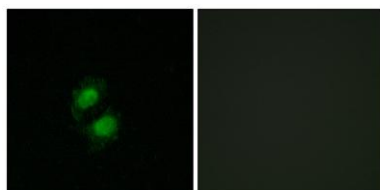
For research use only. Not intended for diagnostic use.

Product Name	ZKSCAN5 rabbit pAb
Host species	Rabbit
Applications	IHC;IF;ELISA
Species Cross-Reactivity	Human;Rat;Mouse;
Recommended dilutions	Immunohistochemistry: 1/100 - 1/300. Immunofluorescence: 1/200 - 1/1000. ELISA: 1/5000. Not yet tested in other applications.
Immunogen	The antiserum was produced against synthesized peptide derived from human ZNF95. AA range:291-340
Specificity	ZKSCAN5 Polyclonal Antibody detects endogenous levels of ZKSCAN5 protein.
Formulation	Liquid in PBS containing 50% glycerol, 0.5% BSA and 0.02% sodium azide..
Storage	Store at -20°C. Avoid repeated freeze-thaw cycles.
Protein Name	Zinc finger protein with KRAB and SCAN domains 5
Gene Name	ZKSCAN5
Cellular localization	Nucleus .
Purification	The antibody was affinity-purified from rabbit antiserum by affinity-chromatography using epitope-specific immunogen.
Clonality	Polyclonal

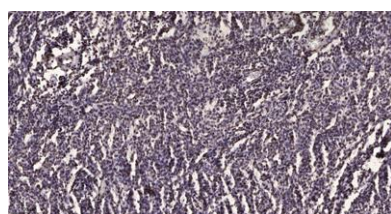
Concentration	1 mg/ml
Observed band	
Human Gene ID	23660
Human Swiss-Prot Number	Q9Y2L8
Alternative Names	ZKSCAN5; KIAA1015; ZFP95; Zinc finger protein with KRAB and SCAN domains 5; Zinc finger protein 95 homolog; Zfp-95

Background

This gene encodes a zinc finger protein of the Kruppel family. The protein contains a SCAN box and a KRAB A domain and may be involved in transcriptional regulation. A similar protein in mouse is differentially expressed in spermatogenesis. Alternative splicing results in multiple transcript variants. [provided by RefSeq, Dec 2015],



Immunofluorescence analysis of A549 cells, using ZNF95 Antibody. The picture on the right is blocked with the synthesized peptide.



Immunohistochemical analysis of paraffin-embedded human brain tumor. 1, Antibody was diluted at 1:200(4° overnight). 2, Tris-EDTA,pH9.0 was used for antigen retrieval. 3,Secondary antibody was diluted at 1:200(room temperature, 45min).