

LDOC1 rabbit pAb

Cat#: orb768250 (Manual)

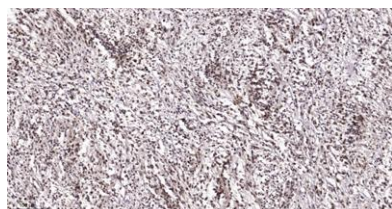
For research use only. Not intended for diagnostic use.

| | |
|---------------------------------|---|
| Product Name | LDOC1 rabbit pAb |
| Host species | Rabbit |
| Applications | IHC;IF;ELISA |
| Species Cross-Reactivity | Human;Mouse |
| Recommended dilutions | Immunohistochemistry: 1/100 - 1/300. ELISA: 1/5000. Not yet tested in other applications. |
| Immunogen | The antiserum was produced against synthesized peptide derived from human LDOC1. AA range:21-70 |
| Specificity | LDOC1 Polyclonal Antibody detects endogenous levels of LDOC1 protein. |
| Formulation | Liquid in PBS containing 50% glycerol, 0.5% BSA and 0.02% sodium azide.. |
| Storage | Store at -20°C. Avoid repeated freeze-thaw cycles. |
| Protein Name | Protein LDOC1 |
| Gene Name | LDOC1 |
| Cellular localization | Nucleus . |
| Purification | The antibody was affinity-purified from rabbit antiserum by affinity-chromatography using epitope-specific immunogen. |
| Clonality | Polyclonal |

| | |
|--------------------------------|--|
| Concentration | 1 mg/ml |
| Observed band | |
| Human Gene ID | 23641 |
| Human Swiss-Prot Number | O95751 |
| Alternative Names | LDOC1; BCUR1; Protein LDOC1; Leucine zipper protein down-regulated in cancer cells |

Background

The protein encoded by this gene contains a leucine zipper-like motif and a proline-rich region that shares marked similarity with an SH3-binding domain. The protein localizes to the nucleus and is down-regulated in some cancer cell lines. It is thought to regulate the transcriptional response mediated by the nuclear factor kappa B (NF-kappaB). The gene has been proposed as a tumor suppressor gene whose protein product may have an important role in the development and/or progression of some cancers. [provided by RefSeq, Jul 2008],



Immunohistochemical analysis of paraffin-embedded human Colon cancer. 1, Antibody was diluted at 1:200(4° overnight). 2, Tris-EDTA,pH9.0 was used for antigen retrieval. 3,Secondary antibody was diluted at 1:200(room temperature, 45min).