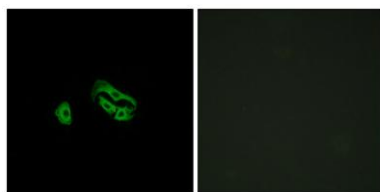


FPRL2 rabbit pAb**Cat#: orb768241 (Manual)**

For research use only. Not intended for diagnostic use.

Product Name	FPRL2 rabbit pAb
Host species	Rabbit
Applications	IF;ELISA
Species Cross-Reactivity	Human;Rat;Mouse;
Recommended dilutions	Immunofluorescence: 1/200 - 1/1000. ELISA: 1/5000. Not yet tested in other applications.
Immunogen	The antiserum was produced against synthesized peptide derived from human FPRL2. AA range:304-353
Specificity	FPRL2 Polyclonal Antibody detects endogenous levels of FPRL2 protein.
Formulation	Liquid in PBS containing 50% glycerol, 0.5% BSA and 0.02% sodium azide..
Storage	Store at -20°C. Avoid repeated freeze-thaw cycles.
Protein Name	N-formyl peptide receptor 3
Gene Name	FPR3
Cellular localization	Cell membrane; Multi-pass membrane protein.
Purification	The antibody was affinity-purified from rabbit antiserum by affinity-chromatography using epitope-specific immunogen.
Clonality	Polyclonal

Concentration	1 mg/ml
Observed band	
Human Gene ID	2359
Human Swiss-Prot Number	P25089
Alternative Names	FPR3; FPRH1; FPRL2; N-formyl peptide receptor 3; FMLP-related receptor II; FMLP-R-II; Formyl peptide receptor-like 2
Background	function:Low affinity receptor for N-formyl-methionyl peptides, which are powerful neutrophils chemotactic factors. Binding of FMLP to the receptor causes activation of neutrophils. This response is mediated via a G-protein that activates a phosphatidylinositol-calcium second messenger system.,similarity:Belongs to the G-protein coupled receptor 1 family.,



Immunofluorescence analysis of HeLa cells, using FPRL2 Antibody. The picture on the right is blocked with the synthesized peptide.