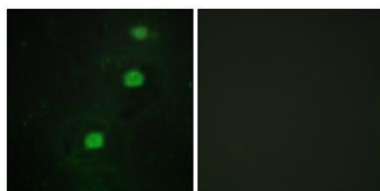


CCRK rabbit pAb**Cat#: orb768234 (Manual)**

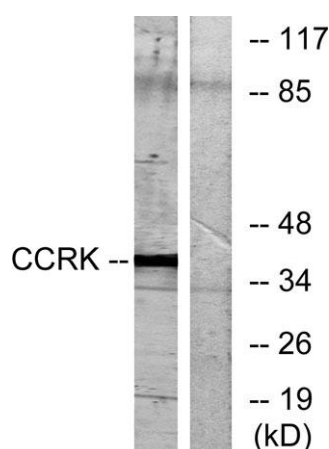
For research use only. Not intended for diagnostic use.

Product Name	CCRK rabbit pAb
Host species	Rabbit
Applications	WB;IHC;IF;ELISA
Species Cross-Reactivity	Human;Mouse;Rat
Recommended dilutions	Western Blot: 1/500 - 1/2000. Immunohistochemistry: 1/100 - 1/300. Immunofluorescence: 1/200 - 1/1000. ELISA: 1/20000. Not yet tested in other applications.
Immunogen	The antiserum was produced against synthesized peptide derived from human CCRK. AA range:31-80
Specificity	CCRK Polyclonal Antibody detects endogenous levels of CCRK protein.
Formulation	Liquid in PBS containing 50% glycerol, 0.5% BSA and 0.02% sodium azide..
Storage	Store at -20°C. Avoid repeated freeze-thaw cycles.
Protein Name	Cyclin-dependent kinase 20
Gene Name	CDK20
Cellular localization	Nucleus . Cytoplasm . Cell projection, cilium .
Purification	The antibody was affinity-purified from rabbit antiserum by affinity-chromatography using epitope-specific immunogen.
Clonality	Polyclonal

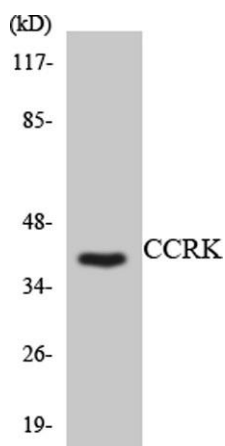
Concentration	1 mg/ml
Observed band	39kD
Human Gene ID	23552
Human Swiss-Prot Number	Q8IZL9
Alternative Names	CDK20; CCRK; CDCH; Cyclin-dependent kinase 20; CDK-activating kinase p42; CAK-kinase p42; Cell cycle-related kinase; Cell division protein kinase 20; Cyclin-dependent protein kinase H; Cyclin-kinase-activating kinase p42
Background	The protein encoded by this gene contains a kinase domain most closely related to the cyclin-dependent protein kinases. The encoded kinase may activate cyclin-dependent kinase 2 and is involved in cell growth. Alternatively spliced transcript variants encoding distinct isoforms have been reported. [provided by RefSeq, Dec 2009],



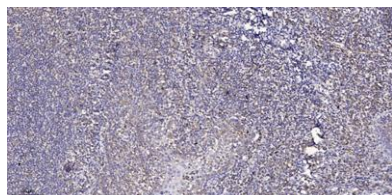
Immunofluorescence analysis of HUVEC cells, using CCRK Antibody. The picture on the right is blocked with the synthesized peptide.



Western blot analysis of lysates from RAW264.7 cells, using CCRK Antibody. The lane on the right is blocked with the synthesized peptide.



Western blot analysis of the lysates from RAW264.7 cells using CCRK antibody.



Immunohistochemical analysis of paraffin-embedded human tonsil. 1, Antibody was diluted at 1:200 (4° overnight). 2, Tris-EDTA, pH 9.0 was used for antigen retrieval. 3, Secondary antibody was diluted at 1:200 (room temperature, 45 min).