

## FOSL2 rabbit pAb

**Cat#: orb768232 (Manual)**

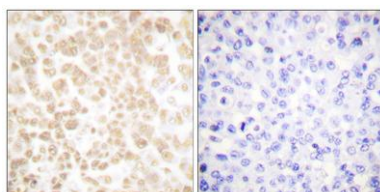
For research use only. Not intended for diagnostic use.

<b>Product Name</b>	FOSL2 rabbit pAb
<b>Host species</b>	Rabbit
<b>Applications</b>	WB;IHC;IF;ELISA
<b>Species Cross-Reactivity</b>	Human;Mouse;Rat
<b>Recommended dilutions</b>	Western Blot: 1/500 - 1/2000. Immunohistochemistry: 1/100 - 1/300. ELISA: 1/10000. Not yet tested in other applications.
<b>Immunogen</b>	The antiserum was produced against synthesized peptide derived from human Fra-2. AA range:271-320
<b>Specificity</b>	FOSL2 Polyclonal Antibody detects endogenous levels of FOSL2 protein.
<b>Formulation</b>	Liquid in PBS containing 50% glycerol, 0.5% BSA and 0.02% sodium azide..
<b>Storage</b>	Store at -20°C. Avoid repeated freeze-thaw cycles.
<b>Protein Name</b>	Fos-related antigen 2
<b>Gene Name</b>	FOSL2
<b>Cellular localization</b>	Nucleus .
<b>Purification</b>	The antibody was affinity-purified from rabbit antiserum by affinity-chromatography using epitope-specific immunogen.
<b>Clonality</b>	Polyclonal

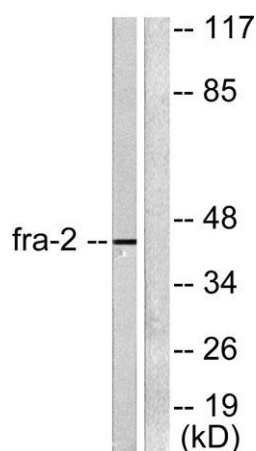
<b>Concentration</b>	1 mg/ml
<b>Observed band</b>	43kD
<b>Human Gene ID</b>	2355
<b>Human Swiss-Prot Number</b>	P15408
<b>Alternative Names</b>	FOSL2; FRA2; Fos-related antigen 2; FRA-2

### Background

The Fos gene family consists of 4 members: FOS, FOSB, FOSL1, and FOSL2. These genes encode leucine zipper proteins that can dimerize with proteins of the JUN family, thereby forming the transcription factor complex AP-1. As such, the FOS proteins have been implicated as regulators of cell proliferation, differentiation, and transformation. [provided by RefSeq, Jul 2014],



**Immunohistochemistry analysis of paraffin-embedded human breast carcinoma tissue, using Fra-2 Antibody. The picture on the right is blocked with the synthesized peptide.**



**Western blot analysis of lysates from LOVO cells, using Fra-2 Antibody. The lane on the right is blocked with the synthesized peptide.**