

Fos B (phospho Ser27) rabbit pAb**Cat#: orb768230 (Manual)**

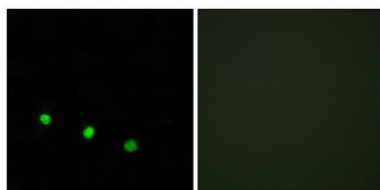
For research use only. Not intended for diagnostic use.

Product Name	Fos B (phospho Ser27) rabbit pAb
Host species	Rabbit
Applications	WB;IHC;IF;ELISA
Species Cross-Reactivity	Human;Mouse
Recommended dilutions	Western Blot: 1/500 - 1/2000. Immunohistochemistry: 1/100 - 1/300. Immunofluorescence: 1/200 - 1/1000. ELISA: 1/5000. Not yet tested in other applications.
Immunogen	The antiserum was produced against synthesized peptide derived from human FosB around the phosphorylation site of Ser27. AA range:12-61
Specificity	Phospho-Fos B (S27) Polyclonal Antibody detects endogenous levels of Fos B protein only when phosphorylated at S27.
Formulation	Liquid in PBS containing 50% glycerol, 0.5% BSA and 0.02% sodium azide..
Storage	Store at -20°C. Avoid repeated freeze-thaw cycles.
Protein Name	Protein fosB
Gene Name	FOSB
Cellular localization	Nucleus .
Purification	The antibody was affinity-purified from rabbit antiserum by affinity-chromatography using epitope-specific immunogen.
Clonality	Polyclonal

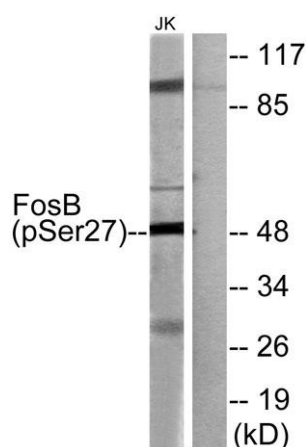
Concentration	1 mg/ml
Observed band	35kD
Human Gene ID	2354
Human Swiss-Prot Number	P53539
Alternative Names	FOSB; G0S3; Protein fosB; G0/G1 switch regulatory protein 3

Background

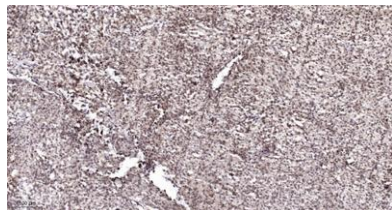
The Fos gene family consists of 4 members: FOS, FOSB, FOSL1, and FOSL2. These genes encode leucine zipper proteins that can dimerize with proteins of the JUN family, thereby forming the transcription factor complex AP-1. As such, the FOS proteins have been implicated as regulators of cell proliferation, differentiation, and transformation. Alternatively spliced transcript variants encoding different isoforms have been found for this gene. [provided by RefSeq, Jul 2008],



Immunofluorescence analysis of HUVEC cells treated with EGF 200nM 5', using FosB (Phospho-Ser27) Antibody. The picture on the right is blocked with the phospho peptide.



Western blot analysis of FosB (Phospho-Ser27) Antibody. The lane on the right is blocked with the FosB (Phospho-Ser27) peptide.



Immunohistochemical analysis of paraffin-embedded human Colon cancer. 1, Antibody was diluted at 1:200(4° overnight). 2, Tris-EDTA,pH9.0 was used for antigen retrieval. 3,Secondary antibody was diluted at 1:200(room temperature, 45min).