

HRT2 rabbit pAb

Cat#: orb768224 (Manual)

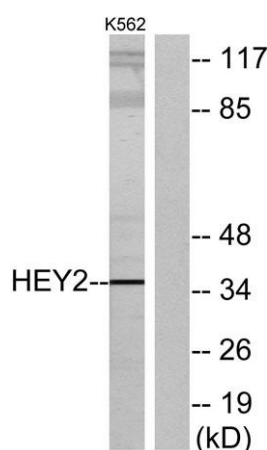
For research use only. Not intended for diagnostic use.

Product Name	HRT2 rabbit pAb
Host species	Rabbit
Applications	WB;IHC;IF;ELISA
Species Cross-Reactivity	Human;Mouse
Recommended dilutions	Western Blot: 1/500 - 1/2000. Immunohistochemistry: 1/100 - 1/300. ELISA: 1/10000. Not yet tested in other applications.
Immunogen	The antiserum was produced against synthesized peptide derived from human HEY2. AA range:21-70
Specificity	HRT2 Polyclonal Antibody detects endogenous levels of HRT2 protein.
Formulation	Liquid in PBS containing 50% glycerol, 0.5% BSA and 0.02% sodium azide..
Storage	Store at -20°C. Avoid repeated freeze-thaw cycles.
Protein Name	Hairy/enhancer-of-split related with YRPW motif protein 2
Gene Name	HEY2
Cellular localization	Nucleus .
Purification	The antibody was affinity-purified from rabbit antiserum by affinity-chromatography using epitope-specific immunogen.
Clonality	Polyclonal

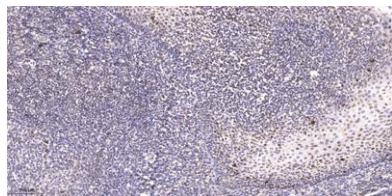
Concentration	1 mg/ml
Observed band	36kD
Human Gene ID	23493
Human Swiss-Prot Number	Q9UBP5
Alternative Names	HEY2; BHLHB32; CHF1; GRL; HERP; HERP1; HRT2; Hairy/enhancer-of-split related with YRPW motif protein 2; Cardiovascular helix-loop-helix factor 1; hCHF1; Class B basic helix-loop-helix protein 32; bHLHb32; HES-related repressor protein 2; Ha

Background

This gene encodes a member of the hairy and enhancer of split-related (HESR) family of basic helix-loop-helix (bHLH)-type transcription factors. The encoded protein forms homo- or hetero-dimers that localize to the nucleus and interact with a histone deacetylase complex to repress transcription. Expression of this gene is induced by the Notch signal transduction pathway. Two similar and redundant genes in mouse are required for embryonic cardiovascular development, and are also implicated in neurogenesis and somitogenesis. Alternatively spliced transcript variants have been found, but their biological validity has not been determined. [provided by RefSeq, Jul 2008],



Western blot analysis of lysates from K562 cells, using HEY2 Antibody. The lane on the right is blocked with the synthesized peptide.



Immunohistochemical analysis of paraffin-embedded human tonsil. 1, Antibody was diluted at 1:200(4° overnight). 2, Tris-EDTA,pH9.0 was used for antigen retrieval. 3,Secondary antibody was diluted at 1:200(room temperature, 45min).