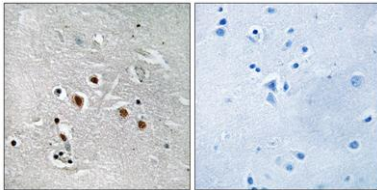


TRAP240 rabbit pAb**Cat#: orb768212 (Manual)**

For research use only. Not intended for diagnostic use.

Product Name	TRAP240 rabbit pAb
Host species	Rabbit
Applications	WB;IHC;IF;ELISA
Species Cross-Reactivity	Human;Mouse
Recommended dilutions	Western Blot: 1/500 - 1/2000. Immunohistochemistry: 1/100 - 1/300. ELISA: 1/10000. Not yet tested in other applications.
Immunogen	The antiserum was produced against synthesized peptide derived from human MED13L. AA range:449-498
Specificity	TRAP240 Polyclonal Antibody detects endogenous levels of TRAP240 protein.
Formulation	Liquid in PBS containing 50% glycerol, 0.5% BSA and 0.02% sodium azide..
Storage	Store at -20°C. Avoid repeated freeze-thaw cycles.
Protein Name	Mediator of RNA polymerase II transcription subunit 13-like
Gene Name	MED13L
Cellular localization	Nucleus .
Purification	The antibody was affinity-purified from rabbit antiserum by affinity-chromatography using epitope-specific immunogen.
Clonality	Polyclonal

Concentration	1 mg/ml
Observed band	250kD
Human Gene ID	23389
Human Swiss-Prot Number	Q71F56
Alternative Names	MED13L; KIAA1025; Mediator of RNA polymerase II transcription subunit 13-like; Mediator complex subunit 13-like; Thyroid hormone receptor-associated protein 2; Thyroid hormone receptor-associated protein complex 240 kDa component-like
Background	The protein encoded by this gene is a subunit of the Mediator complex, a large complex of proteins that functions as a transcriptional coactivator for most RNA polymerase II-transcribed genes. The encoded protein is involved in early development of the heart and brain. Defects in this gene are a cause of transposition of the great arteries, dextro-looped (DTGA).[provided by RefSeq, Jul 2010],



Immunohistochemistry analysis of paraffin-embedded human brain tissue, using MED13L Antibody. The picture on the right is blocked with the synthesized peptide.