

Tensin-2 (phospho Tyr483) rabbit pAb**Cat#: orb768209 (Manual)**

For research use only. Not intended for diagnostic use.

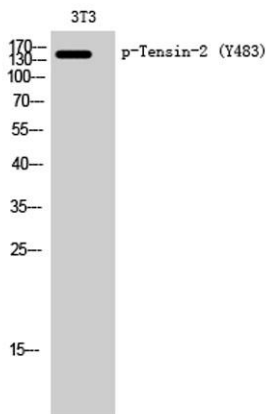
| | |
|---------------------------------|---|
| Product Name | Tensin-2 (phospho Tyr483) rabbit pAb |
| Host species | Rabbit |
| Applications | WB;ELISA |
| Species Cross-Reactivity | Human;Mouse |
| Recommended dilutions | Western Blot: 1/500 - 1/2000. ELISA: 1/10000. Not yet tested in other applications. |
| Immunogen | Synthesized phospho-peptide around the phosphorylation site of human Tensin-2 (phospho Tyr483) |
| Specificity | Phospho-Tensin-2 (Y483) Polyclonal Antibody detects endogenous levels of Tensin-2 protein only when phosphorylated at Y483. |
| Formulation | Liquid in PBS containing 50% glycerol, 0.5% BSA and 0.02% sodium azide.. |
| Storage | Store at -20°C. Avoid repeated freeze-thaw cycles. |
| Protein Name | Tensin-like C1 domain-containing phosphatase |
| Gene Name | TENC1 |
| Cellular localization | Cell junction, focal adhesion . Cell membrane ; Peripheral membrane protein ; Cytoplasmic side . Detected at the end of actin stress fibers. Detected in cytoplasmic punctate bodies (PubMed:22019427). . |
| Purification | The antibody was affinity-purified from rabbit antiserum by affinity-chromatography using epitope-specific immunogen. |

Explore. Bioreagents.

| | |
|--------------------------------|--|
| Clonality | Polyclonal |
| Concentration | 1 mg/ml |
| Observed band | 152kD |
| Human Gene ID | 23371 |
| Human Swiss-Prot Number | Q63HR2 |
| Alternative Names | TENC1; KIAA1075; TNS2; Tensin-like C1 domain-containing phosphatase; C1 domain-containing phosphatase and tensin homolog; C1-TEN; Tensin-2 |

Background

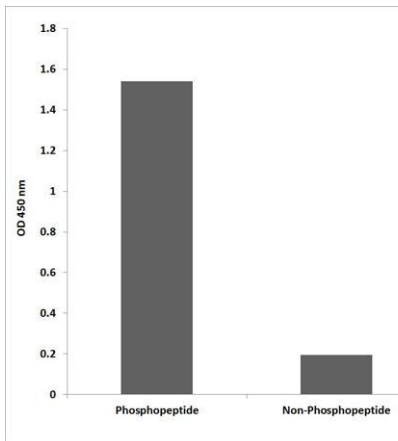
The protein encoded by this gene belongs to the tensin family. Tensin is a focal adhesion molecule that binds to actin filaments and participates in signaling pathways. This protein plays a role in regulating cell migration. Alternative splicing occurs at this locus and three transcript variants encoding three distinct isoforms have been identified. [provided by RefSeq, Jul 2008],



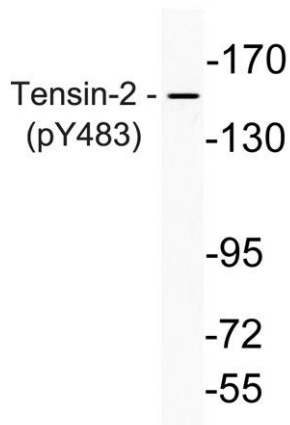
Western Blot analysis of 3T3 cells using Phospho-Tensin-2 (Y483) Polyclonal Antibody diluted at 1:2000



Western Blot analysis of A549 NIH-3T3 SH-SY5Y K562 HELA cells using Phospho-Tensin-2 (Y483) Polyclonal Antibody diluted at 1:2000



Enzyme-Linked Immunosorbent Assay (Phospho-ELISA) for Immunogen Phosphopeptide (Phospho-left) and Non-Phosphopeptide (Phospho-right), using Tensin-2 (Phospho-Tyr483) Antibody



Western blot analysis of lysate from K562 cells, using phospho-Thrensin-2 (Phospho-Tyr483) antibody .