

CLASP1 rabbit pAb**Cat#: orb768206 (Manual)**

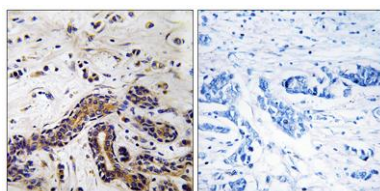
For research use only. Not intended for diagnostic use.

Product Name	CLASP1 rabbit pAb
Host species	Rabbit
Applications	WB;IHC;IF;ELISA
Species Cross-Reactivity	Human;Mouse
Recommended dilutions	Western Blot: 1/500 - 1/2000. Immunohistochemistry: 1/100 - 1/300. ELISA: 1/40000. Not yet tested in other applications.
Immunogen	The antiserum was produced against synthesized peptide derived from human CLASP1. AA range:1171-1220
Specificity	CLASP1 Polyclonal Antibody detects endogenous levels of CLASP1 protein.
Formulation	Liquid in PBS containing 50% glycerol, 0.5% BSA and 0.02% sodium azide..
Storage	Store at -20°C. Avoid repeated freeze-thaw cycles.
Protein Name	CLIP-associating protein 1
Gene Name	CLASP1
Cellular localization	Cytoplasm, cytoskeleton. Cytoplasm, cytoskeleton, microtubule organizing center, centrosome . Chromosome, centromere, kinetochore. Cytoplasm, cytoskeleton, spindle. Golgi apparatus, trans-Golgi network . Localizes to microtubule plus ends. Localizes to ce
Purification	The antibody was affinity-purified from rabbit antiserum by affinity-chromatography using epitope-specific immunogen.

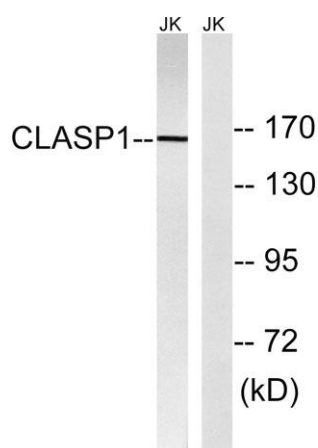
Clonality	Polyclonal
Concentration	1 mg/ml
Observed band	169kD
Human Gene ID	23332
Human Swiss-Prot Number	Q7Z460
Alternative Names	CLASP1; KIAA0622; MAST1; CLIP-associating protein 1; Cytoplasmic linker-associated protein 1; Multiple asters homolog 1; Protein Orbit homolog 1; hOrbit1

Background

cytoplasmic linker associated protein 1 (CLASP1) Homo sapiens
CLASPs, such as CLASP1, are nonmotor microtubule-associated proteins that interact with CLIPs (e.g., CLIP170; MIM 179838). CLASP1 is involved in the regulation of microtubule dynamics at the kinetochore and throughout the spindle (Maiato et al., 2003 [PubMed 12837247]).[supplied by OMIM, Mar 2008],



Immunohistochemistry analysis of paraffin-embedded human testis tissue, using CLASP1 Antibody. The picture on the right is blocked with the synthesized peptide.



Western blot analysis of lysates from Jurkat cells, using CLASP1 Antibody. The lane on the right is blocked with the synthesized peptide.



Explore. Bioreagents.

www.biorbyt.com

Biorbyt Ltd
7 Signet Court, Swann Road, Cambridge, CB5 8LA. United Kingdom
Email: info@biorbyt.com | Phone: +44 (0)1223 859-353 | Fax: +44 (0)1223 280-240

Biorbyt LLC
68 TW Alexander Drive, Durham, NC 27709. United States
Email: info@biorbyt.com | Phone: +1 (415) 906-5211 | Fax: +1 (415) 651-8558