

KIF13B rabbit pAb**Cat#: orb768204 (Manual)**

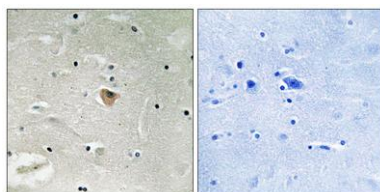
For research use only. Not intended for diagnostic use.

Product Name	KIF13B rabbit pAb
Host species	Rabbit
Applications	WB;IHC;IF;ELISA
Species Cross-Reactivity	Human;Rat;Mouse;
Recommended dilutions	Western Blot: 1/500 - 1/2000. Immunohistochemistry: 1/100 - 1/300. ELISA: 1/5000. Not yet tested in other applications.
Immunogen	The antiserum was produced against synthesized peptide derived from human KIF13B. AA range:111-160
Specificity	KIF13B Polyclonal Antibody detects endogenous levels of KIF13B protein.
Formulation	Liquid in PBS containing 50% glycerol, 0.5% BSA and 0.02% sodium azide..
Storage	Store at -20°C. Avoid repeated freeze-thaw cycles.
Protein Name	Kinesin-like protein KIF13B
Gene Name	KIF13B
Cellular localization	Cytoplasm, cytoskeleton . Cell projection, axon . accumulates at the distal part of the microtubules in the tips of axons, but not of dendrites.
Purification	The antibody was affinity-purified from rabbit antiserum by affinity-chromatography using epitope-specific immunogen.
Clonality	Polyclonal

Concentration	1 mg/ml
Observed band	202kD
Human Gene ID	23303
Human Swiss-Prot Number	Q9NQT8
Alternative Names	KIF13B; GAKIN; KIAA0639; Kinesin-like protein KIF13B; Kinesin-like protein GAKIN

Background

function:May be involved in reorganization of the cortical cytoskeleton. May be functionally important for the intracellular trafficking of MAGUKs and associated protein complexes.,PTM:Phosphorylated upon DNA damage, probably by ATM or ATR.,similarity:Belongs to the kinesin-like protein family.,similarity:Contains 1 CAP-Gly domain.,similarity:Contains 1 FHA domain.,similarity:Contains 1 kinesin-motor domain.,subunit:Binds to DLG1 and DLG4.,tissue specificity:Ubiquitous.,



Immunohistochemistry analysis of paraffin-embedded human brain, using KIF13B Antibody. The picture on the right is blocked with the synthesized peptide.