

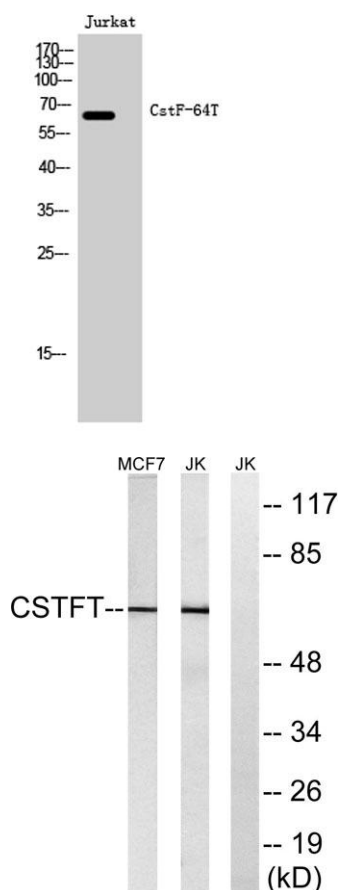
**CstF-64T rabbit pAb****Cat#: orb768203 (Manual)**

For research use only. Not intended for diagnostic use.

<b>Product Name</b>	CstF-64T rabbit pAb
<b>Host species</b>	Rabbit
<b>Applications</b>	WB;IHC;IF;ELISA
<b>Species Cross-Reactivity</b>	Human;Mouse;Rat
<b>Recommended dilutions</b>	Western Blot: 1/500 - 1/2000. Immunohistochemistry: 1/100 - 1/300. ELISA: 1/40000. Not yet tested in other applications.
<b>Immunogen</b>	The antiserum was produced against synthesized peptide derived from human CSTF2T. AA range:91-140
<b>Specificity</b>	CstF-64T Polyclonal Antibody detects endogenous levels of CstF-64T protein.
<b>Formulation</b>	Liquid in PBS containing 50% glycerol, 0.5% BSA and 0.02% sodium azide..
<b>Storage</b>	Store at -20°C. Avoid repeated freeze-thaw cycles.
<b>Protein Name</b>	Cleavage stimulation factor subunit 2 tau variant
<b>Gene Name</b>	CSTF2T
<b>Cellular localization</b>	Nucleus .
<b>Purification</b>	The antibody was affinity-purified from rabbit antiserum by affinity-chromatography using epitope-specific immunogen.
<b>Clonality</b>	Polyclonal

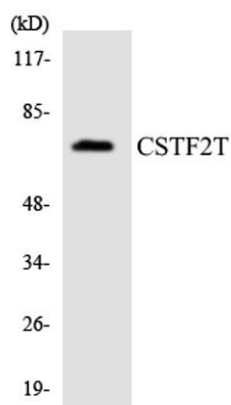
<b>Concentration</b>	1 mg/ml
<b>Observed band</b>	64kD
<b>Human Gene ID</b>	23283
<b>Human Swiss-Prot Number</b>	Q9H0L4
<b>Alternative Names</b>	CSTF2T; KIAA0689; Cleavage stimulation factor subunit 2 tau variant; CF-1 64 kDa subunit tau variant; Cleavage stimulation factor 64 kDa subunit tau variant; CSTF 64 kDa subunit tau variant; TauCstF-64

**Background** function:May play a significant role in AAUAAA-independent mRNA polyadenylation in germ cells. Directly involved in the binding to pre-mRNAs.,PTM:Phosphorylated upon DNA damage, probably by ATM or ATR.,similarity:Contains 1 RRM (RNA recognition motif) domain.,

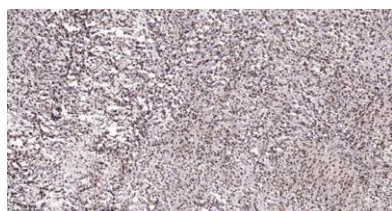


**Western Blot analysis of Jurkat cells using CstF-64T Polyclonal Antibody cells nucleus extracted by Minute TM Cytoplasmic and Nuclear Fractionation kit (SC-003, Invent biotech, MN, USA).**

**Western blot analysis of lysates from Jurkat and MCF-7 cells, using CSTF2T Antibody. The lane on the right is blocked with the synthesized peptide.**



Western blot analysis of the lysates from Jurkat cells using CSTF2T antibody.



Immunohistochemical analysis of paraffin-embedded human Colon cancer. 1, Antibody was diluted at 1:200(4° overnight). 2, Tris-EDTA,pH9.0 was used for antigen retrieval. 3,Secondary antibody was diluted at 1:200(room temperature, 45min).