

ZC3H4 rabbit pAb**Cat#: orb768194 (Manual)**

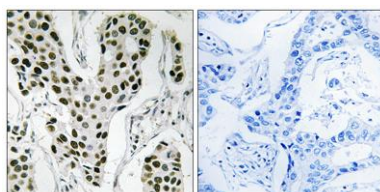
For research use only. Not intended for diagnostic use.

Product Name	ZC3H4 rabbit pAb
Host species	Rabbit
Applications	IHC;IF;ELISA
Species Cross-Reactivity	Human;Mouse
Recommended dilutions	Immunohistochemistry: 1/100 - 1/300. ELISA: 1/10000. Not yet tested in other applications.
Immunogen	The antiserum was produced against synthesized peptide derived from human ZC3H4. AA range:771-820
Specificity	ZC3H4 Polyclonal Antibody detects endogenous levels of ZC3H4 protein.
Formulation	Liquid in PBS containing 50% glycerol, 0.5% BSA and 0.02% sodium azide..
Storage	Store at -20°C. Avoid repeated freeze-thaw cycles.
Protein Name	Zinc finger CCCH domain-containing protein 4
Gene Name	ZC3H4
Cellular localization	Chromosome . Recruited at sites of high RNA polymerase II occupancy. .
Purification	The antibody was affinity-purified from rabbit antiserum by affinity-chromatography using epitope-specific immunogen.
Clonality	Polyclonal

Concentration	1 mg/ml
Observed band	
Human Gene ID	23211
Human Swiss-Prot Number	Q9UPT8
Alternative Names	ZC3H4; C19orf7; KIAA1064; Zinc finger CCCH domain-containing protein 4

Background

This gene encodes a member of a family of CCCH (C-x8-C-x5-C-x3-H type) zinc finger domain-containing proteins. These zinc finger domains, which coordinate zinc finger binding and are characterized by three cysteine residues and one histidine residue, are nucleic acid-binding. Other family members are known to function in post-transcriptional regulation. [provided by RefSeq, Aug 2011],



Immunohistochemistry analysis of paraffin-embedded human breast carcinoma tissue, using ZC3H4 Antibody. The picture on the right is blocked with the synthesized peptide.