

RBM34 rabbit pAb**Cat#: orb768168 (Manual)**

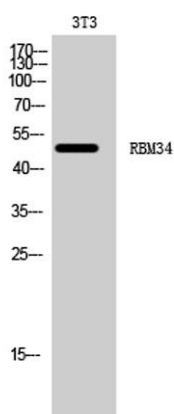
For research use only. Not intended for diagnostic use.

Product Name	RBM34 rabbit pAb
Host species	Rabbit
Applications	WB;IHC;IF;ELISA
Species Cross-Reactivity	Human;Mouse;Rat
Recommended dilutions	Western Blot: 1/500 - 1/2000. Immunohistochemistry: 1/100 - 1/300. ELISA: 1/20000. Not yet tested in other applications.
Immunogen	The antiserum was produced against synthesized peptide derived from human RBM34. AA range:345-394
Specificity	RBM34 Polyclonal Antibody detects endogenous levels of RBM34 protein.
Formulation	Liquid in PBS containing 50% glycerol, 0.5% BSA and 0.02% sodium azide..
Storage	Store at -20°C. Avoid repeated freeze-thaw cycles.
Protein Name	RNA-binding protein 34
Gene Name	RBM34
Cellular localization	Nucleus, nucleolus .
Purification	The antibody was affinity-purified from rabbit antiserum by affinity-chromatography using epitope-specific immunogen.
Clonality	Polyclonal

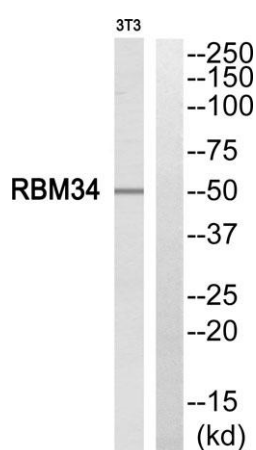
Concentration	1 mg/ml
Observed band	50kD
Human Gene ID	23029
Human Swiss-Prot Number	P42696
Alternative Names	RBM34; KIAA0117; RNA-binding protein 34; RNA-binding motif protein 34

Background

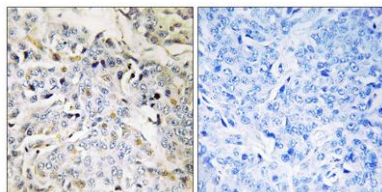
PTM:Phosphorylated upon DNA damage, probably by ATM or ATR.,similarity:Belongs to the RRM RBM34 family.,similarity:Contains 2 RRM (RNA recognition motif) domains.,



Western Blot analysis of 3T3 cells using RBM34 Polyclonal Antibody cells nucleus extracted by Minute TM Cytoplasmic and Nuclear Fractionation kit (SC-003, Invent biotech, MN, USA).



Western blot analysis of RBM34 Antibody. The lane on the right is blocked with the RBM34 peptide.



Immunohistochemistry analysis of paraffin-embedded human breast carcinoma tissue, using RBM34 Antibody. The picture on the right is blocked with the synthesized peptide.